

Mark Twain Circular

Newsletter of the Mark Twain Circle of America
Published in Association with the **Mark Twain Journal**

James S. Leonard, Editor, **Mark Twain Circular**
The Citadel, Charleston, SC 29409

Thomas A. Tenney, Editor, **Mark Twain Journal**
The Citadel, Charleston, SC 29409

Volume 5

January-March 1991

Number 1

Discovery of the Huck Finn Manuscript

Sotheby's, the world's oldest (and largest) fine arts auctioneer, announced that the long-missing manuscript of the first half of *Adventures of Huckleberry Finn* has been found. A Sotheby's press release dated February 13, 1991 (New York, NY) reports, "The newly discovered section of the manuscript was found by one of the descendants of James Fraser Gluck in a trunk in their attic. They brought it to Sotheby's where specialists confirmed that the manuscript is in Twain's own handwriting." Gluck, identified as "a lawyer and civic leader from Buffalo, New York, who was one of the pioneer collectors of American literary manuscripts," at one time also possessed at least the major portion of the 685-page manuscript for the second half of Twain's novel, currently housed at The Buffalo and Erie County Public Library.

According to Sotheby's, the newly discovered manuscript is 665 pages long and "varies significantly from the published text. Written by Twain in pen and ink on notepaper, virtually every page is filled with numerous important corrections, deletions and additions, which provide a remarkable insight into the composi-

tion of this masterpiece." The revisions range "from single words to entire passages."

Although the press release refers to "the possibility of reuniting the manuscript of 'Adventures of Huckleberry Finn,'" plans for actual disposition of the discovered portion seem not to have been fully formulated at present. Stay tuned for further developments.

James S. Leonard
Editor, *MT Circular*

[Thanks to Sotheby's representatives Laura Stewart and Matthew Weigman for providing the above information.]

From the President

Serious students of Mark Twain and his thought and works put in an intellectually active time in Chicago during MLA. Papers in two sessions, one generously sponsored by the American Humor Studies Association, organized and presided over by Susan K. Harris, the other organized by Laura E. Skandera, explored "Mark Twain and Money" and "Mark Twain's Female Coterie: New Perspectives in Twain Biography." Consult your November 1990 *PMLA* for titles and

participants. Both sessions were scholarly and literary treats.

Along with Tom Tenney and the *Mark Twain Journal*, the Circle helped sponsor an open house (well, "suite") for the rest and relaxation of Twainians--"Twainiacs," as we are now being called. The Chicago weather and the pressures of the MLA meeting led a gratifying number of our members to seek asylum and liquid refreshment--no cigars were offered, however--as well as conversation. We were thinking of repeating the experience in Washington at the ALA meeting in May, but the less hectic pace of ALA, along with the attractions of Washington in springtime, have led us to wait until San Francisco and the 1991 MLA.

Also, of course, we will be imbibing and dining at L'Escargot (3309 Connecticut Avenue, 10 minutes by metro or cab from the Mayflower Hotel) on Saturday evening, May 25th. The dinner promises to be excellent; we will be honoring a distinguished Twain scholar for his years of unparalleled service in the revelation of St. Mark; and the price will be under \$30.00. See "Announcement," below, for details.

Several of you have already written to ask about next MLA's program. Although Everett Emerson has expressed a measured optimism about our chances of acceptance by the MLA hierarchy as an associated organization, with status like unto that of the Melville, James, and Poe Societies, we have come to know that many slips are likely. Once again, the American Humor Studies Association has offered to sponsor a session for us, should another slip occur. The MLA deadline being so close, I have asked our Vice-President, David E. E. Sloane--also Executive Director of the A.H.S.A.--to organize a session on *The American Claimant*, a work whose centenary begins just after the 1991 MLA meeting ends. David will also be organizing the 1992 ALA sessions for the Circle, so he is the one with whom interested persons

should be in touch.

Pay your dues, plan to attend the sessions--and the dinner--in Washington, and may we all prosper in the pursuit of the spirit of Mark Twain despite the obstacles placed in our path by the sheer cussedness of the damned human race.

With best wishes to all,
Pascal Covici, Jr.
President, MTCA

Announcement

The Mark Twain Circle will hold its annual dinner meeting in conjunction with the American Literature Association convention in Washington, DC, May 24-26, 1991. The dinner will be held on Saturday, May 25, at L'Escargot Restaurant, 3309 Connecticut Ave. NW. A cash bar for members and their guests will open at 6:30 p.m.; a four-course dinner will be served at 7:30.

The cost will be \$28 per person, which includes a choice of appetizer, entree, and dessert, a caesar salad, complimentary after-dinner libation, gratuity, and applicable taxes. Appetizer choices include lobster bisque, escargots chablisienne, terraine of venison, duck paté, clams casino, and onion soup au gratin. For the entree, diners may choose from grilled salmon on a bed of spinach, blue marlin in mustard sauce, roast leg of lamb au jus, beef stroganoff with wild rice, or veal parmeggiano with pasta.

All members of the Circle are cordially invited to attend, and they may bring guests. Our last two dinner meetings, in New Orleans in '88 and in Washington, DC in '89, were major successes, affording an opportunity for relaxed conversation and pleasurable dining.

Please drop a note to our Executive Co-ordinator, James D. Wilson, if you are interested in attending our 1991 dinner meeting. He will

send you additional information and reservation forms. Reservations should be made before May 10. Send inquiries to: James D. Wilson, Executive Co-ordinator, Mark Twain Circle, Department of English, Box 4691, University of Southwestern Louisiana, Lafayette, LA 70504-4691.

Lilly Library to Host Mark Twain Exhibition

From March 23 through June 30, 1991, the Lilly Library will be exhibiting selections from the Mark Twain collection formed by Nick Karanovich of Fort Wayne, Indiana. The exhibition will contain well over one hundred pieces from this multi-faceted collection, including first editions of many of Twain's famous works, previously unpublished letters and other manuscripts written by Twain, publishers' prospectuses and salesmen's dummies, books from Twain's library, photographs, paintings, film memorabilia, and a wide variety of objects displaying the influence of Mark Twain and his characters on American popular culture.

Among the pieces to be shown are Mark Twain's own mahogany desk, a writing board containing Twain's working notes for *Following the Equator* and *Indiantown*, and one of only three copies made of a bronze casting of Twain's right hand, cast in 1908 by Kendall Banning.

An illustrated catalogue of the exhibition will be published and may be ordered from the Lilly Library. The catalogue, which will be limited to 750 copies, will include transcriptions of a number of previously unpublished twain letters in the Karanovich collection. The price of the catalogue is \$15.00 (postage included).

For more information please contact: Joel Silver, Head of Public Services, Lilly Library, Indiana University, Bloomington, IN 47405; telephone: (812) 855-2452

Quarry Farm Fellowships

The Elmira College Center for Mark Twain Studies at Quarry Farm offers fellowships-in-residence to scholars pursuing research and/or writing in the field of Mark Twain studies. The program of Quarry Farm Fellowships offers free lodging for periods of two weeks to two months at Quarry Farm, where Mark Twain resided and wrote over the course of twenty summers throughout the 1870s and 1880s.

Fellows at the Center have access to the John S. Tuckey Memorial Library shelved on the premises and consisting of more than 250 standard scholarly titles and to the Mark Twain Archives located on the College's nearby campus. The Archives contain an exhaustive collection of biographical, bibliographical, and critical titles; substantial microfilm portions of the major Twain collections housed at Berkeley, Harvard, and Vassar; an extensive collection of first editions; works from the Langdon-Crane Library containing Twain marginalia; and a large collection of photos.

Residents at the center have access to a fully equipped kitchen and laundry facilities on the premises. Bed and bath linen are provided.

For further information write: Dr. Darryl Baskin, Director, Center for Mark Twain Studies, Box EC 900, Elmira College, Elmira, NY 14901.

A Friendly Warning

If you are receiving the *Circular* as a member of the Mark Twain Circle, a year designation--'87, '88, '89, '90, or '91--appears to the right of the zip code on your mailing label. The year indicated is the last year you paid your dues. If that date is '87 or '88 (and aren't you ashamed if it is?), this may be your last *Circular*. If you are in that sinking boat,

please send \$5 for each applicable year to Jim Wilson, the Executive Coordinator, to keep the Circular and other delectable member benefits flowing your way. A word to the wise--and after all, you were wise enough to join the Circle to begin with--should do the job.

Jim Leonard
Editor, *MTC*

Index to Mark Twain: A Reference Guide Updates

The following listings continue Wesley Britton's index to the supplements, through 1988, of Thomas A. Tenney's 1977 *Mark Twain: A Reference Guide*. The indexed material includes addenda contained (but not indexed) in the *Reference Guide* itself, annual supplements in *American Literary Realism* (1977-83), supplements in the "About Mark Twain" section of the *Mark Twain Circular* (1987-88), and other material (not necessarily relating to the *Reference Guide*) in the 1987 and 1988 volumes of the *Circular*. See Britton's instructions ("Using This Index") in the May-June 1990 *Circular* for explanation of abbreviations and other details of notation. The index will continue in the next *Circular*.

Davis, Chester (77) 380, 387, 409, 410; (78) 207, 215, 273; (80) 208; (82) 34-35
 Davis, Curtis C. (Ad.) 398
 Davis, Howard (80) 193
 Davis, Sam (see also *Territorial Enterprise*) (77) 330, 345; (78) 183; (81) 163
 Davis, Sara AMT April 87
 Davis, Thadious M. AMT Feb. 87
 Dawson, Sir Geoffry Leo Simon (see Glyn, Anthony)
 Day, A. Grove (Ad.) 400
 Day, Katherine (79) 211
 Day, John (80) 194

Dayton, Ohio (79) 269
 de Abruña, Laura N. AMT Dec. 87
 death (as subject by MT) (79) 220, 231, 232, 233, 238, 258; (81) 186, 191; (83) 207
 "Death Disk, The" (81) 178
 DeCiccio, Albert C. AMT Sept. 88
 "Defense of General Funston, A" (81) 176
 Defoe, Daniel (77) 395
 Delaney, Paul (Ad.) 406; CIRC Nov. 87, p. 3
 De Menil, Alexander (77) 333
 Denslow, W. W. (80) 210
 Densmore, Gilbert B. (see also GILDED AGE-play) (81) 161
 Depew, Chauncey (77) 338, 340; (79) 189
 "de Quille, Dan" (William Wright; see also *Territorial Enterprise*, Nevada, literary comedians) (77) 330, 345, 364, 385; (79) 239, 275; (81) 163; (82) 31; AMT May, 88, Oct. 88; CIRC March 88, pp. 1-2, July 88, pp 1-3
 "Derelict, The" (poem by MT) (78) 207
 descriptive technique, MT's (83) 197
 detective stories (see also "Stolen White Elephant", "Double Barreled Detective Story", *TSD*, *PW*) AMT Aug. 87
 "Determinism, Scientific" (see also *MS*, *CY*, *WIM?*, *Letters from the Earth*) (79) 247, 258, 259; (80) 203-204, 214; (81) 186; (83) 202; (Ad.) 406
Devil's Race Track, The (80) 222
 DeVoto, Bernard (77) 386, 409; (79) 212, 216; (80) 192; (81) 186; CIRC Nov. 87, p. 3, Dec. 87, pp. 1-2
 Detweiler, Robert (Ad.) 403
 Dewey, Admiral (81) 170
 dialect in MT's fiction (79) 258; (80) 218; (81) 184
 Dickens, Charles (77) 337, 408; (78) 191, 207; (81) 167, 168; (82) 40
 Dix, Eulabee (77) 342
 Dmitriev, V. G. (Ad.) 401
 Dodderidge, Joseph AMT July 88
 "Dog's Tale, A" (78) 173, 209; (79) 228
 Dolmetsch, Carl AMT Feb. 87
 "Dooley, Mr." (83) 170 (also see Dunne, Finley Peter)
 Doughty, Nanelia (Ad.) 401

- Dos Passos, John (78) 196
 Doten, Alfred (78) 200
 double, the (literary motif; also see duality) (81) 174; (82) 16
 "Double-Barrelled Detective Story, A" (see also Banks, R. Jeff) (77) 332, 379; (78) 172; (79) 187; (82) 9, 35
 Douglas, Frederick (78) 191
 Doyno, Victor (83) 215
 dreams in MT's fiction (see also "Curious Dream," "Great Dark," MS) (82) 21; (83) 219
 Dreiser, Theodore (77) 394; (78) 217
 Drummond, Henry (78) 170
 duality (see double, P&P, PW, *Those Extraordinary Twins*) (82) 21
 Duckett, Margaret CIRC Nov. 87, p. 3
 Duke, Charles (Ad.) 406
 Duncan, Capt. Charles C. (see also IA, *Quaker City*) AMT April 87, Sept. 88
 Duncan, John E. AMT April 87, Sept. 88
 Dunne, Finley (78) 188 (also see "Dooley, Mr.")
 Duram, James C. (Ad.) 403
 Duram, John M. (Ad.) 400
 Dutch criticism of MT (83) 206
 Dwyer, Richard AMT Sept. 88
 Dyer, Herman (78) 165
- Early Tales and Sketches* (Vol. 1) (80) 207; (82) 34
 Eby, Cecil AMT July 88
 Eby, E. H. (Ad.) 403
 Eddy, Mary Baker (see also Christian Science) (77) 394; (78) 173, 174; (82) 10
 education (as subject by MT) (80) 184, 189; AMT Nov. 87
 Edward VII (Albert Edward, Prince of Wales) (77) 335, 338, 340; (79) 195
 Edwards, Jonathan AMT Sept. 88
 Egan, Maurice (77) 339
 Eggleston, Edward (77) 355, 397
 Egri, Peter (Ad.) 398
 Eliot, T.S. (78) 203
 Elliott, George P. (Ad.) 398
 Ellis, Allan B. (Ad.) 400
 Ellis, Elmer (78) 188
 Ellison, Ralph (77) 353, 358, 373, 405; (81) 183
 Elmira, NY (see Langdon family members) (77) 399; (79) 250, 259, 270, 273; (80) 204, 214, 221; (82) 35, 41-42; (83) 211, 217; AMT Sept. 87, Jan. 88; CIRC Oct. 87, pp. 1-2
 Emberson, Frances Guthrie (Ad.) 397
 Emerson, Everett (81) 189, 192; (83) 216; CIRC July 88, p. 3
 Emerson, Ralph Waldo (82) 15; (83) 202; AMT July 88
 Emrich, Duncan (77) 345
 Enang, S.D. (Ad.) 405
 "Enchanted Sea-Wilderness, The" (83) 202
 Endore, Guy (77) 349
 England (see also Oxford, Savage Club) (77) 409; (78) 172, 174, 218; (79) 191, 267, 276; (80) 192, 214; (81) 165, 166; (83) 191; (Ad.) 397, 403
 Ensor, Allison (77) 388; (79) 246, 251, 260; (82) 35, 36, 43; (Ad.) 403
Europe and Elsewhere (77) 338; (79) 202, 253
 Evans, Albert S. ("Fitz Smythe") (79) 225
 Evans, Edwin T. (80) 203
 Evans, Elizabeth (Ad.) 408
 "Eve's Diary" (78) 173, 192, 196; (82) 10
 Ewing, Raymond (82) 30, 31; AMT Nov. 87
 "Experience of the McWilliamses with Membranous Coup" (also see "McWilliamses and the Burglar Alarm," "Mrs. McWilliams...") (81) 184
 "Extracts from Adam's Diary" (79) 187; (80) 179, 217; (82) 10
 extra-sensory perception (ESP) see spiritualism, "Mental Telepathy"
- Fables of Man, Mark Twain's* (79) 248, 257
 "Facts Concerning the Recent Carnival of Crime in Connecticut" (77) 410; (78) 215; (79) 236, 260, 262; (80) 170; (82) 33, 38; (83) 218, 221
 Fadiman, Clifton (77) 354, 399
 Fairbanks, Mary Mason (see IA, *Quaker City*) (81) 180; (83) 187
 Farmer, Philip José AMT July 87
 Fatout, Paul (77) 399; (79) 260; CIRC Nov. 87, p. 3
 Faulkner, William (77) 353; (79) 238,

- 253; (80) 201; (83) 182
 Favat, F. André (Ad.) 400
 Felheim, Marvin (Ad.) 397, 402
 Fellows, Lawrence (Ad.) 408
 Fender, Stephen CIRC Nov. 87, p. 3
 "Fenimore Cooper's Literary Offences"
 (83) 167
 Ferber, Edna (78) 217
 Ferguson, Delancy (78) 190; (79) 222;
 (Ad.) 397
 Ferguson, Henry (79) 248
 Ferguson, Samuel (79) 248
 Fetterley, Judith (79) 271
 Fick, Thomas AMT May 88
 Fiedler, Leslie (77) 349, 361; (78)
 204; (79) 226, 251; (82) 24, 31;
 (83) 215; (Ad.) 400
 Fischer, Victor AMT May 87
 Fishkin, Shelley Fisher AMT July 88
 Fitch, George Hamlin (79) 198
 Fitch, Thomas (81) 164
 Fitzgerald, F. Scott (82) 20
 Fitzroy, Sir Almeric (Ad) 397
Following the Equator; More Tramps
Abroad (also see India; Australia;
 New Zealand) (77) 338, 392, 395;
 (78) 170, 215; (79) 185, 186, 233,
 241, 242, 259; (80) 173-174, 206;
 (81) 170; (82) 8, 35; (83) 168;
 AMT Sept. 88
 Foner, Philip (82) 36
 food (as subject by MT) (79) 231,
 248; (80) 193
 Ford, Gerald R. (Ad.) 407
 Foerster, Norman (79) 206
 "Fortification of Paris, The" (79)
 247
 "Forty-Three Days in an Open Boat"
 (see also *Hornet*, Mitchell, Capt.
 Josiah) (79) 248; (81) 181; (82)
 20
 France (and French criticism of MT)
 (also see Paris, France) (78) 184;
 (79) 254, 257; (80) 189; (81) 168;
 (83) 177
 Franklin, Benjamin AMT Sept. 88
 Frazer, Laura Hawkins (78) 185; (79)
 224
 Frear, Walter CIRC June 87, p. 1
 Freddi, Giovanni (Ad.) 398
 Fredonia, NY (82) 37; (83) 204
 Free Thinkers (78) 184
 Freeman, Mary E. Wilkins (77) 338;
 (79) 204
 "f.m.c." (free men of color) (81) 189
 Freese, Peter (Ad.) 405
 Freimarck, Vincent (77) 346
 Freud, Sigmund (77) 333, 335, 337,
 341; (79) 260; (Ad.) 408; AMT
 March 88; CIRC Dec. 88, pp. 2-3
 Fried, Martin B. (Ad.) 398
 Frohmann, Daniel (80) 190
 Frost, Robert (83) 221
 Fulton, Robert Lardin (78) 182
 Furnas, J. C. AMT March 88
 Furniss, Harry (77) 333
 Gabler-Hover, Janet A. AMT Jan. 88
 Gabrilowitsch, Clara Clemens (see
 Samossoud, Clara Clemens)
 Gabrilowitsch, Ossip (78) 201, 205,
 221; (80) 194; (81) 174; (82) 42;
 (83) 182; AMT April 87
 Galbraith, John Kenneth (77) 358
 Galligan, Edward L. AMT May 88
 Gally, James W. (77) 345
 Gardener, Jane AMT July 88
 Garfield, James (78) 191
 Garland, Hamlin (77) 338, 394; (79)
 253
 Gasson, Roy AMT June 87
 Gaston, George (Ad.) 405
 Gaylin, Willard (Ad.) 408
 Geismar, Maxwell (79) 244; (Ad.) 403,
 404, 405
Georgia Scenes (80) 203
 Gerber, John C. (Ad.) 402; AMT April
 87, May 88
 German criticism of MT (80) 195-196;
 AMT Jan. 88
 "German Language, The" (78) 191; (79)
 213
 Gibson, William (77) 400, 410; (78)
 201, 217; (79) 228
 Gibson, Willis (80) 174
 Giddings, Robert AMT May 87
 Gidney, James B. (Ad.) 404
Gilded Age, The (see also "Sellers,
 Col.," and Warner, Charles D.)
 (77) 338, 357, 367, 374, 375, 383,
 384, 405, 408; (78) 161, 162; (79)
 181, 203, 235, 237, 239, 241, 262,
 270; (80) 169, 174, 191, 203; (81)
 167, 184; (82) 26; (83) 166, 169,
 209; (Ad.) 401, 402, 403, 406; AMT
 Sept. 87, March 88, July 88
Gilded Age (play) (see also Densmore,
 Gilbert; Raymond, John T. and
 "Sellers, Col.") (80) 170, 178,
 221; (81) 161, 178; (82) 4; AMT

Sept. 88
 Gilder, Joseph (77) 334
 Gilder, Richard Watson (77) 368; (82) 43; (83) 178
 Gillis, Jim CIRC March 88, pp. 1-2
 Gillis, Steve (81) 170-171, 173-174; CIRC March 88, p. 2
 Gillis, William (77) 364; (79) 205
 Gilman, Susan AMT July 88, Sept. 88
 Gloster, Hugh (79) 218
 Glyn, Anthony (Sir Geoffry Leo Simon Dawson) (80) 190
 Glyn, Elinor (78) 189; (80) 190
 Gohdes, Clarence (77) 364
 "Golden Arm, The" (77) 336, 347; (78) 197
Golden Era (77) 412; (83) 211
 Goldstone, Herbert (77) 347
 "Goodbye" (poem by MT, see "Parting of the Ships")
 Goodman, Arthur Jule (77) 330
 Goodman, Joseph (see also Nevada, *Territorial Enterprise*) (77) 331; (78) 183; (81) 162, 174, 189; (83) 170-171; CIRC July 88, pp. 1-3
 Goodwin, C.C. (81) 169
 Goodwin, Francis II (79) 238
 Goodwin, James (80) 217
 Gorki, Maxim (79) 231, 247; (82) 42; AMT Sept. 88
 Goto, Akio (Ad.) 402
 Goto, Shoji AMT Sept. 88
 Graham, J.B. (77) 336
 Graham, Mary AMT May 88
 Graham, William A. (79) 190
 Grahame, Frances (77) 331
 Grand, Sarah (79) 275
 Grant, Orville (82) 30, 31
 Grant, U.S. (77) 368, 372, 378, 393; (78) 173, 202, 212; (80) 174, 181, 208; (81) 187; (82) 34
 Gray, David (77) 373
 "Great Dark, The" (see also dreams) (77) 403; (78) 201, 204; (79) 266; (80) 211; (82) 46; (83) 199-200, 202; AMT May 87
 "Great Republic's People Stand" (80) 185
 "Great Revolution in Pitcairn, The" (81) 168
 Greeley, Horace (83) 203
 Green, Martin CIRC Nov. 87, p. 3
 Gregory, Ralph (Ad.) 399; (Ad.) 408
 Greening, Tabitha Quarles (79) 190
 Gribben, Alan (77) 389, 400; (78) 208; (79) 261, 271; (80) 203, 210, 218, 219; (83) 196, 201, 216; AMT April 87; CIRC Nov. 88, p. 4
 Gridley, Reuel C. (77) 386
 Griffin, George (77) 397; (78) 193
 Grissom, Brad AMT Oct. 87
 Gross, Seymour (77) 358
 guilt, as subject by MT (82) 27-28
 Gunn, George (79) 189
 Gwin, Minrose AMT Nov. 87
 Hagood, J. Huxley AMT Sept. 87
 Haldeman-Julius, Emanuel (78) 182; (81) 176
 Halley's Comet (82) 30, 42
 Halsey, Francis (77) 333
 Hammond, Edward P. (77) 401; (78) 208
 Hammond, John Hays (77) 342, 344
 Hamon, Louis (see "Cheiro")
 Hamsun, Knut (Ad.) 398
 Hannibal, Mo. (77) 372, 376, 377, 402, 408; (79) 185, 210, 224, 237, 268, 270; (80) 176, 182, 184, 186, 190, 196, 203, 210, 222; (81) 171, 173, 175, 177, 179; (82) 30; (83) 168, 182, 191, 193-194; (Ad.) 408; AMT Sept. 87, Sept. 88
 Hansen, Chadwick (Ad.) 405; AMT July 88
 Hanscon, Leslie (77) 351
 Hardy, Thomas (79) 247; (Ad.) 406
 Hare, Augustus (77) 332
 Harnsberger, Caroline T. AMT April 87
 Harper and Bros. Publishers (80) 176
 Harper, J. Henry (see also Harper and Bros.) (80) 180
 Harris, Joel Chandler (77) 336, 347, 401, 410; (78) 197; (89) 207; (81) 189; (82) 15, 33, 36; (Ad.) 401; AMT Sept. 88
 Harris, Julia (77) 336
 Harris, Susan K. (83) 201
 Hart, James D. (Ad.) 402
 Harte, Bret (see also AH SIN) (77) 345, 378; (78) 167, 179, 186, 212; (79) 180, 189, 198, 203, 251, 253; (81) 162, 164, 165, 167; (82) 12, 43; (83) 166, 174; AMT Sept. 88; CIRC Nov. 87, p. 3
 Hartford, Conn. (79) 247, 248, 249, 250, 251, 255; (80) 192, 203, 205, 206, 211, 221; (81) 187, 191-192; (82) 4-5; (83) 188, 202, 208; AMT April 87, Sept. 88, CIRC July 87, p. 3

ABOUT MARK TWAIN

Abbreviations used in this bibliographical series are listed in the January/February 1990 *Mark Twain Circular*. In addition, a combination of year, letter, and number refers to an entry in my *Mark Twain: A Reference Guide* (Boston: G. K. Hall, 1977), and ALR refers to one of its supplements appearing in the journal *American Literary Realism*. Readers wishing to keep up to date on Twain scholarship may also wish to consult the list of other recommended bibliographic sources in the January/February 1990 *Circular*.

Thomas A. Tenney
(Editor, *MT Journal*)

=====

BRANCH, EDGAR MARQUESS. "'Old Times on the Mississippi': Biography and Craftsmanship." *Nineteenth-Century Literature* 45.1 (June 1990): 73-87. The semi-autobiographical "Old Times on the Mississippi," published in the *Atlantic Monthly*, is well informed and accurate on details of the river and the pilots' union, but the story of the cub's apprenticeship "is a selectively focused and artfully manipulated version" of MT's experience. The cast of steamboats and characters is much reduced, and the cub is portrayed as younger and more naïve than MT actually was at the time--this, Branch suggests, because MT's "sense of self in relation to future experience was positive, strong, and aggressive," while memories of past experiences were often laden with frustrations, wounded feelings, and humiliation.

BRITTON, WESLEY. "Tom Paine and Mark Twain: 'Common Sense' as a Source for 'The War Prayer.'" *CCTE Studies* 54 (1989): 13-19. MT admired Paine and alluded to his works many times, but to protect his literary reputation from controversy did not publish "The War Prayer" in his lifetime. It is

similar to Paine's "Common Sense" in "diction, purpose, rhetorical devices and tone," and MT's use of an angelic messenger resembles Paine's use of the prophet Samuel.

COOLEY, JOHN (ED.). *Mark Twain's Aquarium: The Samuel Clemens Angel-fish Correspondence 1905-1910*. Athens: U of Georgia P, 1991. In his late years MT acquired a series of honorary granddaughters. First was Gertrude Natkin (mustered out, to her distress, when she turned sixteen), followed by a set he named for the angel fish whose beauty he had admired in Bermuda: Helen Allen, Margaret Blackmer, Marjorie Breckenridge, Dorothy Butes, Irene Gerkin, Dorothy Harvey, Hellen [sic] Martin, Frances Nunnally, Louise Paine, Dorothy Quick, Jean Spurr, Dorothy Sturgis, and Carlotta Welles. Cooley here prints their surviving correspondence, together with relevant passages from MT's notebooks and autobiographical dictations, and other significant sources. This book deserves a place on the "Mark Twain" shelves of every respectable library.

DOLMETSCH, CARL. "Mark Twain Abroad: How the American Humorist Explored the Musical Life of Fin-de-Siècle Vienna." *Musical America* 110.2 (March 1990): 53-56. On the period from September 1897-May 1899 when the Clemenses lived in and near Vienna. Clara began as a piano student of Theodor Leschetizky (whose other students included Paderewski, Gabrilówitsch, Schnabel, and Ignaz Friedman), but he persuaded "her to switch career goals and develop her pleasant contralto voice." The Clemenses often dined with Leschetizky (whose table talk entranced MT) and his wife, and actively pursued the musical life of Vienna. Among MT's other Viennese friends was Johann Strauss.

HOLT, ELVIN. "A Coon Alphabet and the Comic Mask of Racial Prejudice." *Studies in American Humor* 5(ns).4

(Winter 1986-87, c 1990): 307-18. On the illustrator of *HF*, Edward Windsor Kemble, who joined the original *Life* as a cartoonist in 1883; among his assignments were the illustrations for a strip of comic dialect stories called "The Thompson Street Poker Club." His illustrations for *HF* won MT's praise for this "genius of an illustrator," but Kemble's *A Coon Alphabet* (1898; reprinted 1978) reflects the racism of the time, with the blacks drawn as "nappy-headed, saucer-eyed, broad-nosed, thick-lipped, grinning, ragged sub-humans whose misfortunes were an unending source of humor for whites." Nine of Kemble's offensive illustrations are reproduced here.

HORWITZ, HOWARD. "'Ours by the Law of Nature': Romance and Independence on Mark Twain's River." *Boundary 2* (Duke UP) 17.1 (Spring 1990): 243-71. "Critical discussion . . . has neglected the economics of piloting's aesthetic values. These economics warrant examination because Twain's romance of the pilot's independence figures the idealized security of property rights that a free market economy seemed at once to promise and occlude. Ultimately, levees and dredged channels rather than the steamboat will master the river, and even the pilot's independence is illusory.

KISKIS, MICHAEL. (ED.). *Mark Twain's Own Biography: The Chapters from the "North American Review."* Madison: U of Wisconsin P, 1990. These "Chapters from My Autobiography" appeared serially in 1906-07, and include material not reprinted in later editions of MT's autobiographical writings and dictations. The rich annotation is valuable, as are appendixes giving chronologies of MT's autobiographical writings and publication of them in volumes edited by Paine, DeVoto, and Neider. Kiskis has given us a new, fresh, and important version which will all take a deserved place beside them in every

library.

WEIMANN, ROBERT. "Realism, Ideology, and the Novel In America (1886-1896): Changing Perspectives in the Work of Mark Twain, W. D. Howells, and Henry James." *Boundary 2* (Duke UP) 17.1 (Spring 1990): 189-210. On MT, 295-301, attributing his late pessimism not only to personal losses, but also to the "newer reality" which challenged the foundations of belief. In *MS* and *Letters from the Earth* he termed "the moral sense" a uniquely human defect which rendered man the only animal able to see and choose evil. *CY* had left some hope that overthrowing inhuman social institutions could help reassert the old values, but in the "masterpiece" *PW* he recognized the whole tradition of American individualism as flawed.

Dates to Circle

May 24-26, 1991. The Mark Twain Circle will offer two sessions (three papers each) at the 1991 American Literature Association meeting in Washington, DC. A dinner meeting of the Circle will be held on May 25 at L'Escargot Restaurant. See the Covici and Wilson items above for more details.

June 26-30, 1991. The Ninth International Humor Conference, at Brock University, St. Catharines, Ontario, Canada. Contact Ann Marie Guilmette, Department of Recreation and Leisure Studies, Brock University, St. Catharines, Ontario, Canada L2S 3A1.

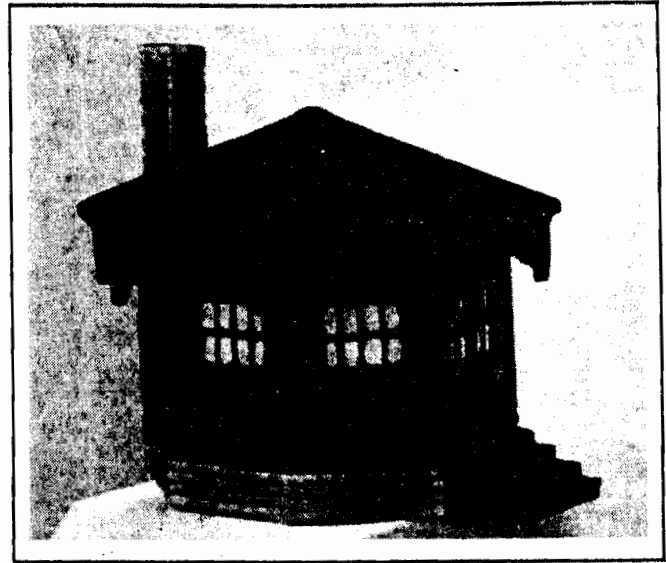
Publication of the *Mark Twain Circular* is funded in part through a grant from the Citadel Development Foundation.

Thanks to student assistant Mark Little (The Citadel) for his help in preparing this issue of the *Circular*.

"It's the loveliest study you ever saw."

Mark Twain

It is the study he wrote
TOM SAWYER and
THE ADVENTURES
OF HUCK FINN in.
Now through this exclusive offer
from *Hillside Creations* this
limited edition of Mark Twain's
Octagon Study can be yours.



Actual size 4 1/2"

Crafted from ceramic using a mold created by a master moldmaker each Study is individually poured, hand assembled (from four separate molds), hand cleaned and hand painted; then numbered and initialed by the artist. This attention to detail is revealed in the gingerbread of the arches and the stonework of the chimney.

Hillside Creations is proud that this limited edition replica is considered so authentic that it is on permanent display at Mark Twain's residences at Quarry Farm in Elmira, New York and Mark Twain's Boyhood Home Museum in Hannibal, Missouri.

To reserve your replica of Mark Twain's Study, please complete the form below.

Please reserve _____ copy (ies) of the Mark Twain Study for me.

I have enclosed a one time payment of \$85.00 plus \$5.00 for shipping and handling.

Name _____

Address _____

Phone () _____

Please allow 4 to 6 weeks for delivery.
(New York State residents please
add appropriate sales tax)

This form may be copied.

Send To:
Hillside Creations
RD # 1 Box 167 Peacefield Road
Pine City, NY 14871

ABOUT THE CIRCULAR. The *Mark Twain Circular* was launched in January 1987 by Thomas A. Tenney (Editor of the *Mark Twain Journal*), who edited the first issue, then passed the *Circular* baton to the present editor. An individual who pays dues to the Mark Twain Circle of America or subscribes to the *Mark Twain Journal*, or both, receives one subscription (four issues per year) to the *Circular*. The Mark Twain Circle and the *Mark Twain Journal* are independent entities, but members of the Circle enjoy a reduced subscription rate for the *Journal* (see subscription forms below).

ABOUT THE CIRCLE. The Mark Twain Circle of America was formed at an organizational meeting held at the December 1986 Modern Language Association convention in New York; the membership has since grown to approximately 350. Current officers are: President--Pascal Covici, Jr.; Vice President--David E. E. Sloane; Executive Coordinator--James D. Wilson; Executive Committee--Everett Emerson, Alan Gribben, and Susan K. Harris. Past Presidents: Louis J. Budd, Alan Gribben. Past Executive Coordinator: Everett Emerson. Although many members are academic specialists, the Circle also includes many non-academic Twain enthusiasts. The Circle is in communication with other Mark Twain organizations, including those associated with sites important in his life, and cooperates with them.

ABOUT THE JOURNAL. Founded in 1936 by Cyril Clemens, the *Mark Twain Journal* is the oldest American magazine devoted to a single author. In 1982 Mr. Clemens retired, and the *Journal* moved to its present home in Charleston, S.C., under the editorship of Thomas A. Tenney. There are two issues per year, Spring and Fall, with a new volume each year (rather than every second year, as in the past). The *Journal* tends to appear late, and begs your patient indulgence. New subscribers may wish to begin with the 1988 issues rather than 1990. Prices are on the coupon below. Paid individual members of the Mark Twain Circle should note that fact and deduct \$5.00 per year from any subscriptions to the *Journal*. Back issues from 13:1 to the present are available at \$5.00 each, postpaid (\$2.50 on orders for ten or more; pre-1983 issues are thinner than modern ones and some are badly reprinted). An index 1936-83 counts as a back issue.

<p>To: James D. Wilson Executive Coordinator, Mark Twain Circle University of Southwestern Louisiana Lafayette, LA 70504</p> <p>Please enroll me in the MARK TWAIN CIRCLE OF AMERICA. I enclose a check for \$7.00 (\$8.00 for a non-U.S. address) made out to the MARK TWAIN CIRCLE OF AMERICA.</p> <p>_____</p> <p>(printed name)</p> <p>_____</p> <p>(address)</p> <p>_____</p>	<p>To: <i>Mark Twain Journal</i> Box 1834 Charleston, SC 29402</p> <p>Please enter my subscription to the <i>Mark Twain Journal</i> at \$12.00 for 1988, \$15.00 for 1989 or 1990. Individual members of the Mark Twain Circle of America should deduct \$5.00 per year.</p> <p>_____</p> <p>(printed name)</p> <p>_____</p> <p>(address)</p> <p>_____</p> <p>LIBRARIES: \$15.00/year, no discount FOREIGN: add \$1.00/ year for postage</p>
--	--

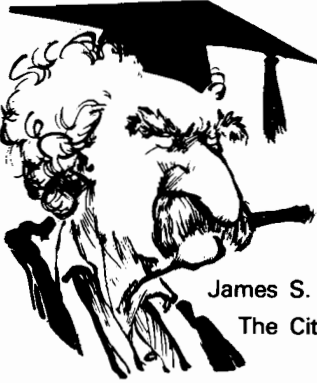
FULFILLMENT NOTICE: The Spring 1988 (26:1) issue of the *Mark Twain Journal* was mailed out to subscribers in July 1990. The next issue (26:2) is moving along well, with material in corrected proof.

LIBRARIANS: Please note in your computer that the *Mark Twain Circular* every three months provides publication information on the delayed *Mark Twain Journal*. This may help reduce avoidable claims. Your cooperation is important. Our staff is very small, and we must allocate time between responding to claims and finishing the issues due on your subscription. Avoiding needless claims will help speed the publication of issues you need.

SERIAL LIBRARIANS: The *Mark Twain Circular* is entered selectively in the annual bibliographies of the Modern Language Association and the Modern Humanities Research Association, in the *Literary Criticism Register*, in *American Literary Scholarship*, and in "A Checklist of Scholarship on Southern Literature," appearing annually in the *Mississippi Quarterly* (Spring issues). The *Mark Twain Circular* contains ongoing annotated bibliography which began in *Mark Twain: A Reference Guide* (G.K. Hall, 1977) and continued in seven issues of *American Literary Realism*, from 1977-1983. Please file and bind with your *Mark Twain Journal*.

Mark Twain Circular
J. S. Leonard, Editor
The Citadel
Charleston, SC 29409

Non-Profit Org.
U.S Postage
PAID
Charleston, SC
Permit NO. 779



Mark Twain Circular

Newsletter of the Mark Twain Circle of America
Published in Association with the **Mark Twain Journal**

James S. Leonard, Editor, **Mark Twain Circular**
The Citadel, Charleston, SC 29409

Thomas A. Tenney, Editor, **Mark Twain Journal**
The Citadel, Charleston, SC 29409

Volume 5

April-June 1991

Number 2

Mark Twain at the ALA

There will be two sessions sponsored by the Mark Twain Circle at the 1991 ALA meeting in Washington, DC. The first will be titled "Mark Twain and the Matter of Europe" and will be chaired by Susan K. Harris (Queens C). Papers: Wesley Britton (U of North Texas), "Mark Twain and Thomas Carlyle: The French Revolution and Visions of Democracy (or, Why Mark Twain Hated the French)"; Jennifer L. Rafferty (U of Connecticut--Storrs), "'All that is solid melts into air': The Dissolution of World and Self in *The Mysterious Stranger* and *Sartor Resartus*"; Victor Doyno (SUNY--Buffalo), "'The Battle-Royale': Twain, Jim, and Huck Fight Nobility!" The second session will be titled "Mark Twain and Some Ambivalences" and will be chaired by Stanley Brodwin (Hofstra U). Papers: Lucinda MacKethan (North Carolina State U), "Matriarchal Designs in *Adventures of Huckleberry Finn*"; John Bird (Converse C), "Mark Twain on the Telephone: Love (and Hate) on the Line"; Richard H. Cracroft (Brigham Young U), "'A Pathetic Thing to See': Problematic Irony in Mark Twain's *Roughing It* and Elsewhere." Consult the conference program for times.

The annual dinner meeting of the Circle will be held at L'Escargot

Restaurant, 3309 Connecticut Ave. NW, on May 25. The cost will be \$28 per person (a bargain), including choice of appetizer, entree, and dessert, a caesar salad, complimentary after-dinner libation, gratuity, and applicable taxes. Contact James D. Wilson, Executive Co-ordinator, Mark Twain Circle, Department of English, Box 4691, University of Southwestern Louisiana, Lafayette, LA 70504-4691 by May 10 for reservations. For more details see Jim Wilson's "Announcement" in the January-March *Circular*.

Jim Leonard
Editor, *MTC*

Fall Twain Symposium

The Mark Twain Memorial has announced that the second annual Fall Twain Symposium will take place Saturday and Sunday, October 12-13, 1991 at the MT Memorial in Hartford, CT. The subject will be "Mark Twain: Issues of Race and Prejudice." Last year's symposium was a great success, and this year's will again bring scholars together for two full days of discussion and argument about the legacy of the nation's most celebrated author. The Memorial has issued a call for papers in all areas

of race-related issues pertaining to Twain's life and work, including interpretations of his relationship to a wide spectrum of the nation's cultural diversity. Research in progress and recently published material are especially encouraged. Eight papers will be selected for presentation, each about 20 minutes in length.

The Symposium will again bring distinguished scholars to the event as respondents; this year's list already includes Hamlin Hill and James Cox. On Sunday the presenters and respondents will have the opportunity to tour the Twain home and archives, and end the weekend with a roundtable discussion. All travel costs and accommodations will be provided for the presenters. Discounted hotel rates will be arranged for registrants, and Saturday lunch and all receptions will be included in the registration fee.

Those interested in submitting abstracts (no more than 500 words) should do so, with a curriculum vitae, before June 1, 1991. Notification of selections will be made by August 1, 1991. Send materials or queries to John Vincent Boyer, Executive Director, Mark Twain Memorial, 351 Farmington Avenue, Hartford, CT 06105; or call (203) 247-0998, Monday-Friday, 8:30-4:30.

Mark Twain/Harriet Beecher Stowe Teacher Institute

The Connecticut Humanities Council and the Stowe-Day Foundation will sponsor a two-week seminar, July 8-19, at Nook Farm (Hartford, CT), for secondary school (9-12) teachers of English; American literature, history, and studies; and allied disciplines. Participants will interact with noted Mark Twain and Harriet Beecher Stowe scholars through lectures, small-group discussions, and individual conferences. The textual focus will be on *Pudd'nhead Wilson*

and *Uncle Tom's Cabin*. Lecturers on Twain will be Shelley Fisher Fishkin ("Race and Culture at the Century's End: A Social Context for *Pudd'nhead Wilson*"), Susan K. Gillman ("Mark Twain's *Pudd'nhead Wilson* and the Black Woman's Novel of Passing" and "Domestic Ideology and 'Good Racial Books'"), Paul Lauter ("Accessibility and Authority: Mark Twain, Harriet Beecher Stowe, and Academic Culture"), Arnold Rampersad ("Mark Twain, Langston Hughes, and the Teaching of *Pudd'nhead Wilson*"), and James D. Wilson ("Tension between the Rational and the Religious in Later Mark Twain"). Contact Maura Hagearty, The Stowe-Day Foundation, 77 Forest St., Hartford, CT 06105 (phone: 203-522-9258).

Index to Mark Twain: A Reference Guide Updates

The following listings continue Wesley Britton's index to the supplements, through 1988, of Thomas A. Tenney's 1977 *Mark Twain: A Reference Guide*. The indexed material includes addenda contained (but not indexed) in the *Reference Guide* itself, annual supplements in *American Literary Realism* (1977-83), supplements in the "About Mark Twain" section of the *Mark Twain Circular* (1987-88), and other material (not necessarily relating to the *Reference Guide*) in the 1987 and 1988 volumes of the *Circular*. See Britton's instructions ("Using This Index") in the May-June 1990 *Circular* for explanation of abbreviations and other details of notation. The index will continue in the next *Circular*.

Harvey, George (77) 336; (78) 175, 184; (79) 188, 202
Hauck, Richard (Ad.) 403
Hawaii (see Sandwich Islands)
Haweis, H.R. (80) 170
Hawes, Baldwin (see Cable, George W.)

- (79) 217
Hawes, Helen Chesney (79) 276
Hawthorne, Nathaniel (see also *Scarlet Letter*) (79) 276
Hay, John Miton (77) 334, 339, 401; (79) 189; (83) 188
Hayes, Rutherford B. (78) 203
Hazuka, Tom AMT Nov. 87
Heath, William AMT Sept. 88
Heaton, Henniker (78) 178
Hebrew criticism of MT (79) 252
Heim, David AMT March 88
Heller, Joseph (77) 382
Heller, Otto (80) 182
Hemingway, Ernest (77) 384; (79) 229, 243, 265; (80) 201, 202; (82) 23; (Ad.) 404
Henderson, Archibald (79) 193; (80) 197
Henderson, Harry (Ad.) 406
Henley, E.J. (77) 331
Hentoff, Nat AMT March 88
Herald, New York (benefit fund for MT) (80) 173
Hicks, Grenville (77) 354
Higginson, Thomas W. (82) 12
Hill, Hamlin (77) 389, 402; (78) 214; (82) 36-37; (83) 201; (Ad.) 399, 400, 405, 406; CIRC Nov. 87, p. 3
Hillier, Alfred P. (77) 331
Hingston, Edward P. (79) 180, 274
Hirst, Robert H. (80) 207, 215
history (in MT's fiction) (80) 195; (82) 25
Hoffman, Frederick J. (Ad.) 398
Holbrook, Hal (77) 349, 350, 358, 387, 412; (79) 227, 233
Holliday, Widow (81) 175
Holmes, Oliver Wendell (77) 366; (79) 190, 215
Holmes, Sherlock (see *Double-Barreled Detective Story*)
Holt, Henry (79) 200, 201; (80) 178
Holthausen, F. (Ad.) 397
Hong, Ronald W. AMT July 88
Hood, Tom (77) 330; (79) 194, 260-261; (80) 220; (81) 172
Hooper, Johnson J. (77) 352
Hopelessly Lost (film of HF) (83) 187
Hornet (clipper ship--see also "43 Days in An Open Boat," Mitchell, Capt. Josiah, Sandwich Islands) (79) 248; (81) 181; (82) 20
"Horse's Tale, A" (79) 191; (82) 10
Horsford, M. Gibson (77) 350
Hotton, John Camden (78) 161; (79) 260-261
Howard, Leon (Ad.) 399
Howe, E.W. (80) 180
Howe, Julia Ward (80) 176; (82) 12
Howells, William Dean (77) 352, 358, 362, 390, 392, 397, 403, 406; (78) 171, 175, 193, 212; (79) 181, 187, 189, 190, 194, 196, 198, 203, 204, 206, 224, 252, 262; (80) 172, 187, 189; (81) 184; (82) 166; (83) 170, 173, 174, 188; (Ad.) 406; AMT Sept. 88
Howland, Robert Muir and Louise (77) 408
"How Nancy Jackson Married Kate Wilson" AMT March 87
"How to Make History Dates Stick" (79) 209
How to Tell a Story, and Other Essays (78) 169; (79) 206
Hoy, James F. (Ad.) 407
Hsu, C. Y. (Ad.) 406
Hubbell, Jay (77) 347
Huckleberry Finn, Adventures of (77) 330, 333, 337, 338, 342, 348, 349-350, 352-360, 365-368, 370, 371, 373, 375-378, 381, 390, 391, 394-398, 404, 406, 407, 410, 411; (78) 164, 182, 185, 188, 190, 194, 196, 198, 199-201, 204, 205, 208, 210, 212, 216, 217; (79) 180, 187, 188, 211, 213, 218, 221, 222-223, 226, 228-233, 235-244, 251-254, 256-258, 262, 263, 265, 266, 268, 269, 272, 274, 276; (80) 172, 173, 187, 191-193, 196, 198, 202, 203, 207, 209, 210, 212, 214, 221, 223, 224; (81) 179, 180, 182, 183, 185-187, 189-191, 193-194; (82) 17-20, 22-29, 33, 40, 42-44; (83) 167, 181, 187; (83) 193, 194, 199, 200-209, 212-217, 220-222; (Ad.) 398, 399, 400, 401, 402, 403, 404, 405, 406, 407, 408; AMT Feb. 87, May 87, June 87, July 87, Aug. 87, Sept. 87, Oct. 87, Nov. 87, Dec. 87, Jan. 88, March 88, May 88, July 88, Sept. 88; CIRC Sept. 88, pp. 3-4
Huckleberry Finn (plays) (80) 181
Huckleberry Finn (movie versions, see also *Hopelessly Lost*) (79) 256; (80) 194-195, 200
Huck Finn and Tom Sawyer Among the Indians (77) 361, 398; (79) 244

- Huckleberry Finn (as character by other writers) (80) 184, 200; CIRC Nov. 88, p. 4
- Hughes, Langston (Ad.) 398
- Hungary, MT's visit (83) 203
- "Hunting for H---" (sketch by MT) (83) 196
- Hutton, Laurence and Eleanor (77) 334, 336; (80) 172, 203, 205; (83) 167-168
- Hyslop, James H. (81) 170
- Idler, The* (79) 184, 194
- "Incredible Rocky Mountain Race, The" (79) 253
- "In Defence of Harriet Shelley" (83) 167
- India (also see *Following the Equator*). (77) 395; (78) 209; (79) 180, 184, 221, 231, 233, 234, 241, 242, 264, 270; (80) 205, 206; (81) 183, 186; (83) 166: (Ad.) 402
- Indians, American (as subject by MT) (79) 263, 265; (81) 192-193; CIRC Nov. 87, p. 3
- Inge, M. Thomas AMT Feb. 87
- Ingersoll, Robert G. (77) 354, 406; (80) 179
- Innocents Abroad* (see also *Quaker City*, Fairbanks, Mary; *Alta*, San Francisco) (77) 332, 333, 335, 338, 359, 362, 376-378, 382, 412; (78) 165, 187, 190, 210; (79) 180, 205, 222, 237, 260, 271; (80) 169, 172, 193, 201, 202, 215, 221; (81) 161; (82) 39; (83) 192, 200, 206, 221; (Ad.) 399, 400, 403; AMT April 87, July 87, July 88, Sept. 88
- In Purgatory* (play by MT) (81) 178
- "International Lightning Trust, The" (81) 188
- International Mark Twain Society (83) 178
- "Invalid's Story, The" (82) 37
- Irving, Sir Henry (77) 338, 340
- Irving, Washington (80) 222
- Irwin, W. R. AMT March 88
- Isler, Carl (Ad.) 408
- Is Shakespeare Dead?* (78) 176; (79) 194, 197, 205; (81) 181; (82) 11; (83) 179; AMT July 88
- Italian criticism of Twain (79) 249
- Italy (82) 10, 11
- "Jackass Hill" (see Gillis brothers) (80) 179
- Jackson, Robert (83) 186
- James, Henry (77) 360, 390; (79) 257; (81) 185; (Ad.) 402; AMT July 88
- Janssen, Dale AMT Oct. 87
- Japanese translations, criticism of MT (79) 268; (81) 193; (82) 20; (83) 207; AMT March 88, Sept. 88; CIRC July 87, p. 1
- Jefferson, Douglas (Ad.) 404
- Jefferson, Joseph (82) 43
- Jerome, Jerome K. (77) 340, 342
- Jessop, George H. (80) 172
- "Jim Baker's Blue Jay Yarn" (78) 202; (79) 250; AMT Sept. 88; CIRC Sept. 87, pp. 1-2
- "Jim Smiley and his Jumping Frog" (see "Celebrated Jumping Frog")
- "Jim Wolf and the Cats" (see also cats) (79) 194; (80) 207
- Joan of Arc* (see *Personal Recollections of Joan of Arc*)
- John H. Dickey* (steamboat, see also steamboats) (83) 183
- Johnson, Lyndon B. (Ad.) 407
- Johnston, Richard Malcolm (77) 352
- Jones, Howard Mumford (79) 224; (Ad.) 398; CIRC Nov. 87, p. 3
- Jordon, Elizabeth (82) 14
- Joyce, James (77) 349
- Jubilee Singers (77) 330; (Ad.) 407
- Justus, James (Ad.) 403
- Kahn, Sholom (78) 216; (79) 242, 248, 262; (81) 180, 193; AMT Nov. 87
- Kamei, Shunsuke (Ad.) 406
- Kaplan, Justin (77) 358, 371, 375; (78) 204; (79) 234, 272; (80) 211; (Ad.) 400, 405; AMT Sept. 87
- Kapoor, S. D. AMT March 88
- Karita, Motoji (Ad.) 405
- Kaufmann, David AMT Nov. 87
- Kaun, Alexander (77) 343; (79) 207
- Keetch, Brent (Ad.) 408
- Keller, Helen (also see Macy, Anne Sullivan) (77) 341, 347; (80) 203, 205
- Kemble, W. (77) 330
- Kemble, Edward W. (80) 210; (82) 36; (Ad.) 408
- Kennedy, John F. (77) 359, 370
- Keokuk, Iowa (see also Clemens, Orion, "The War Prayer") (79) 270;

- (82) 35
- Kerr, Orpheus C. (see also literary comedians) (77) 406
- Kesey, Ken (79) 276
- Kestele, James L. AMT July 88
- Kestersen, David (77) 376; (83) 203; (Ad.) 407
- Ketterer, David (Ad.) 406; AMT June 87, May 88
- "King Leopold's Soliloquy" (see also Congo; Leopold II) (78) 175; (79) 261; (83) 183
- Kipling, Rudyard (77) 331, 362, 370, 391, 401; (78) 174, 192; (79) 186, 192, 247, 256; (80) 195; (81) 177
- Kirst, Sean Peter AMT May 88
- Kiskis, Michael J. AMT July 88
- Klasg, Phillip (Ad.) 406
- Kohli, Raj (Ad.) 402
- Kolb, Harold H. (77) 410; AMT April 87, May 88
- Korda, Alexander (83) 187
- Kordecki, Lesley C. AMT July 88
- Krauth, Leland (Ad.) 406; CIRC Nov. 87, p. 3
- Kravec, Maureen (Ad.) 408
- Kriegel, Leonard (Ad.) 399
- Kruse, Horst (83) 195-196
- Lambton, Arthur (79) 202
- Lampton, James (81) 172
- Landau, Sarah AMT Sept. 88
- Landon, Melville (79) 185
- Lang, Andrew (78) 165; (79) 182, 183
- Lang, H. Jack (Ad.) 405
- Langdon, Charles Jarvis (77) 342; (78) 201; (80) 217; (82) 35; AMT Jan. 88
- Langdon Home (78) 159
- Langdon, Ida (78) 191, 193
- Langdon, Jarvis (77) 342, 359; (78) 210; (83) 211
- Langdon, Olivia L. (mother to Olivia Clemens) (82) 35
- Lanning, George (77) 344
- Lanina, T. (Ad.) 403
- Lauber, John AMT Sept. 88
- Lauritzen, Henry (78) 196
- Leacock, Stephen (77) 338, 364; (79) 215
- Leary, Katy (77) 389; (79) 231, 268
- Leary, Lewis (77) 391; (79) 229, 242; (Ad.) 402, 404
- Leavis, F. R. (77) 348
- Lee, Elizabeth (77) 336
- Lee, Francis "Lightfoot" (77) 396; (79) 218-219
- Lee, Harper (77) 372
- Lee, L. L. (Ad.) 406
- Lefcourt, Charles (Ad.) 401
- Legman, G. (Ad.) 408
- Leighton, Lauren AMT Oct. 87
- Leisy, Ernest Erwin (79) 206
- LeMaster, J. R. AMT June 87
- Lennon, Nigey CIRC Nov. 87, p. 3
- Leopold II (Emperor of Belgium) (see also Congo, "King Leopold's Soliloquy") (79) 231; (81) 165
- Letters from the Earth* (77) 353, 354, 355, 382, 411; (79) 258
- Letters of Mark Twain, The* (77) 337,
- Libman, Z. (Ad.) 404
- Library of Humor, Mark Twain's* (77) 364; (78) 199; (83) 170
- Life on the Mississippi* (see also *Old Times on the Miss.*; Bixby, Horace; steamboats) (77) 338, 342, 346, 348, 368, 378, 391, 396, 409, 410, 412; (79) 206, 210, 216, 219, 225, 232, 244, 255, 262, 270, 274; (80) 186, 198, 199; (81) 167, 188; (82) 45; (83) 190, 195, 204, 217; (Ad.) 398, 399, 400, 404-405; AMT April 87, March 88
- Life on the Mississippi* (PBS movie) (80) 215, 223; (83) 189
- Lincoln, Abraham (77) 380; (79) 251
- Lindeman, Jack (Ad.) 401
- Lindley, Elizabeth (79) 196
- Lindsey, Vachel (77) 394
- Lingenfelter, Richard E. AMT Sept. 88
- literary comedians (see also Billings, Josh; De Quille, Dan; Kerr, Orpheus C.; Nasby, Petroleum V.; Nye, Bill; Wqrd, Artemus; Sloane, David E. E.) (83) 203
- "Literary Nightmare, A" (see "Punch, Brothers, Punch")
- Little Shepherd of Kingdom Come* (79) 189
- Livingston, James L. (Ad.) 406
- Loomis, Charles Battell (77) 331
- Longstreet, Augustus Baldwin (see *Georgia Scenes*)
- Long, E. Hudson AMT June 87
- Longtin, Ray C. (77) 365
- Lo-Johansson, Ivar (Ad.) 403
- Lorch, Fred W. (Ad.) 397
- Lotos Club (79) 183; (81) 171
- Love, Robertus (80) 199

- Love, William De Loss (79) 189
Lovingood, Sut (81) 179
Lowell, James Russell (77) 334
Lucas, Edward Verral (77) 342
Lucy, Sir Henry (77) 337
Lukens, Henry Clay (78) 166
Lyndoe, Edward (83) 181
Lynn, Kenneth S. (77) 352, 356, 377, 410; (Ad.) 399
Lyon, Isabel (78) 203, 212; (79) 243; (80) 201; (83) 191; AMT April 87
- Mabie, Hamilton Wright (79) 189
Machan, Tim AMT Jan. 88
machines (in MT's life) (80) 209, 219
Machlis, Paul AMT June 87
Mack, Effie Mona CIRC Nov. 87, p. 3
Macy, Anne Sullivan (also see Keller, Helen) (77) 341
Maik, Thomas A. AMT Jan. 88
Malory, Sir Thomas (79) 228, 261
M'Alpine, Frank (80) 172
"mammoth Cod" (poem by MT) (78) 204, 205; (Ad.) 408; AMT April 87
Manierre, William (Ad.) 406
"Man That Corrupted Hadleyburg, The" (77) 382, 406, 408, 411; (78) 171; (79) 186, 245, 273; (80) 205, 221; (81) 184, 188; (82) 9, 15, 33, 37, 38, 40; (83) 204, 212; (Ad.) 401, 407
"Man That Corrupted Hadleyburg, The" (TV movie) (80) 219; (83) 189
Marks, Barry AMT July 88
Marks, Leo (77) 350
Mark Twain: Beneath the Laughter (TV special) (80) 224
"Mark Twain Club, The" CIRC Sept. 88, p. 1
"Mark Twain Surprised" (Open letter by MT) (82) 5
Marsh, Andrew (also see *Territorial Enterprise*) (80) 199
Marsh, Andrew J. (77) 374
Marsh, Grant (78) 177
Marshall, Percy (Ad.) 399
Martin, Jay CIRC Feb. 87, pp. 1-2
Martin, Willard (Ad.) 407
Marx, Leo (Ad.) 398; AMT July 88, Sept. 88
Marxist criticism of MT (81) 176
Masons (see freemasonry) (80) 178
Masters, Edgar Lee (77) 345, 394; (79) 200
Matthews, Brander (77) 330, 332, 338; (79) 181, 186, 192; (80) 172, 177, 178
- Maugham, W. Somerset (77) 342
Maulsby, D.L. (77) 331
Mauranges, J. P. (Ad.) 405
Mayo, Frank (77) 331, 338
McBride, William M. AMT Aug. 87, March 88
McCall, Samuel (77) 336
McCarry, Charles (Ad.) 404
McClain, Laurence AMT Sept. 88
McDougall, Walt (77) 339; (81) 171
McElrath, Joseph R. (Ad.) 406
McFarland, John M. (82) 19
"McFarlane" (82) 19
McFee, William (77) 338
McIntosh, T. R. AMT Oct. 87
McKelway, St. Clair (79) 189
McLinn, William (83) 188, 218
McNutt, James C. CIRC Nov. 87, p. 3
McVeagh, Wayne (79) 189
"McWilliamses and the Burglar Alarm" (see also "Experience of the McWilliams"; "Mrs. McWilliams...") (81) 191-192
Meisterschaft (play by MT) (81) 178
Mejan, Maurice (79) 269
Meltzer, Milton AMT Aug. 87
Melville, Herman (77) 353, 375, 376, 384, 394; (78) 201; (79) 239, 255; (80) 206
Men and Things (83) 170
Mencken, Ada Isaacs (82) 31
Mencken, H.L. (78) 182, 217; (79) 195; (81) 175; (82) 11-12
"Mental Telepathy" (see "telepathy")
Merry Tales (82) 6
Miller, Joaquin (79) 219
Miller, Henry (79) 247; (82) 21
Miller, Perry (77) 360; (79) 226
Millet, Frank (77) 331
"Missouri Press Association" AMT July 88
Mitchell, Captain Josiah (see also *Hornet*, "43 Days in Open Boat") (79) 248; (81) 181; (82) 20
Moffett, Pamela (77) 412; (78) 215; (79) 265
Moffett, Samuel (79) 186
"Monday Evening Club of Hartford, Connecticut" (79) 238
"Monkeypod Tree, Mark Twain's" CIRC June 87, pp. 1-3
Moore, Julia (77) 352, 401
Moore, Rayburn (Ad.) 404

- More Tramps Abroad* (see *Following the Equator*)
- Morley, Christopher (80) 183
- Morrow, Patrick AMT Sept. 88
- Mormons (77) 382
- Morris, Clara (79) 189
- Morris, R.E. (79) 185
- Morse, Edward S. (77) 330
- Morton, J. Sterling (77) 336
- Mott, Bertram (Ad.) 407
- movies (adaptations of MT works) (79) 256; (82) 17-18; (83) 187, 189
- "Mrs. McWilliams and the Lightning" (see also "Experience of the McWilliamses"; "McWilliamses and the Burglar Alarm") (81) 184
- "mugwumps" (83) 205
- Muir, Andrew (77) 347
- Mumey, Nolie (79) 207
- Murphy, Brenda AMT July 88
- music (see also Wagner, Richard) (82) 39
- Mussolini, Benito (78) 186
- "My Debut as a Literary Person" (79) 248
- Mysterious Stranger* (77) 348, 354, 355, 379, 392, 394, 398, 400, 411; (78) 215, 216; (79) 201, 226, 232, 239, 240, 242, 249-252, 258, 262, 271, 272; (80) 206; (81) 188, 192, 193; (82) 20, 21, 24, 26, 38, 45; (83) 199, 220; (Ad.) 399, 406, 407; AMT June 87; CIRC Dec. 87, p. 2
- Nakahara, Rie AMT March 88
- Nasby, Petroleum V. (see also literary comedians) (77) 406; (79) 180
- Nast, Thomas (78) 173, 204; (79) 245; (80) 176
- "National Editorial Association" AMT July 87
- Macnaughton, William R. (79) 273
- "Negro, the" (as subject in fiction) (80) 186, 192
- Neider, Charles (77) 411; (78) 207; (79) 255; (80) 195; (83) 206; (Ad.) 399; AMT April 87, June 87
- Nelson, Lawrence (77) 343
- Nevada (also see *Territorial Enterprise*, DeQuille, Dan, Stewart, William) (77) 400; (78) 190, 195, 200; (79) 193, 194, 196, 207, 217, 239, 274, 275; (80) 199, 220; (81) 170-171; (82) 34; (83) 191, 212; AMT May 88; CIRC Nov. 87, p. 3
- Nevius, Blake (Ad.) 398
- Newcomb, Simon (82) 34
- New Hampshire (83) 186
- New Zealand (see also *Following the Equator*) (78) 215; (79) 259; (81) 177
- Nicoll, Sir Robertson (81) 169
- Nichols, Charles S. (77) 352
- Nicholson, Meredith (77) 338
- Nicholson, William (79) 187
- Nigro, August J. AMT June 87
- Nilson, Alleen Page AMT Sept. 88
- Nilson, Don AMT Sept. 88
- Nixon, Richard (77) 367, 377, 408
- Nock, S. A (77) 349
- "Nook Farm" (see also Hartford, Conn.) (79) 225, 251; (80) 192; (Ad.) 397
- Norris, Frank (78) 173
- "Notorious Jumping Frog of Calaveras County" (see "Celebrated Jumping Frog")
- No. 44, *The Mysterious Stranger* (see *Mysterious Stranger*)
- Nunnally, Frances (78) 200
- Nye, Bill (Edgar Wilson Nye; see also literary comedians) (78) 183; (81) 171
- O'Connor, T.P. (81) 166
- Odessky, Marjory H. (Ad.) 402
- O'Higgins, Harvey (80) 178
- Ohio, MT in AMT May 88
- Okubo, Hiroshi AMT March 88; Sept. 88
- Old Times on the Mississippi* (also see *LOM*) (77) 385, 408; (79) 223, 258; (82) 20-21, 28; (83) 217; (Ad.) 407; AMT Sept. 88
- Onanism (Ad.) 408; AMT April 87
- 1,000,000 Bank-Note and Other Stories* (also see *American Claimant*) (78) 166, 211; (82) 8, 33, 38
- Orcutt, William Dean (77) 342, 343
- O'Rell, Max (77) 333
- Orlova, R. (Ad.) 404
- 100th Centennial of MT's birth (81) 173
- Orwell, George (77) 362
- Osgood, James (77) 366; (Ad.) 404
- osteopathy (81) 190
- "Our Fellow Savages of the Sandwich Islands" (lecture) (81) 161

Dates to Circle

May 24-26, 1991. The Mark Twain Circle will offer two sessions (three papers each) at the 1991 American Literature Association meeting in Washington, DC. A dinner meeting of the Circle will be held on May 25 at L'Escargot Restaurant. See "Mark Twain at the ALA" (above) for details.

June 26-30, 1991. The Ninth International Humor Conference, at Brock University, St. Catharines, Ontario, Canada. Contact Ann Marie Guilmette, Department of Recreation and Leisure Studies, Brock University, St. Catharines, Ontario, Canada L2S 3A1.

July 8-19, 1991. The Mark Twain/Harriet Beecher Stowe Teacher Institute for secondary school (9-12) teachers at Nook Farm (Hartford, CT). See notice above for details.

October 12-13, 1991. Second Annual

Fall Twain Symposium, "Mark Twain: Issues of Race and Prejudice," at the Mark Twain Memorial in Hartford, CT. See notice above for details.

December 27-30, 1991. MLA Convention in San Francisco. David E. E. Sloane is arranging a session for the Circle, under the auspices of the American Humor Studies Association. Projected presenters: Alan Gribben, Susan K. Harris, and Judith Y. Lee; respondents: Andrew Jay Hoffman and Suzi Asher. See subsequent *Circulars* for more details.

Publication of the *Mark Twain Circular* is funded in part through a grant from the Citadel Development Foundation.

Thanks to student assistant Mark Little (The Citadel) for his help in preparing this issue of the *Circular*.

"In a sense this book begins where Huck's ends, with its protagonist—still an adolescent for all his thirty-three years—restlessly measuring himself against the demands of an establishment culture that seemed poised to either embrace or to smother him, or both."

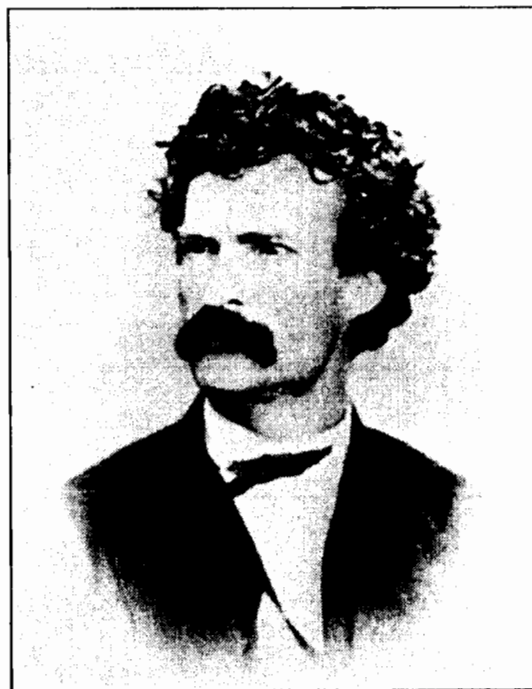
—from the introduction

Getting To Be Mark Twain

by JEFFREY STEINBRINK

This is the story of the coming of age of Mark Twain. It begins in 1867, with Clemens stepping off the steamship *Quaker City* and almost immediately declaring himself "in a fidget to move." It comes to a close in 1871, with Clemens settling in Hartford.

250 pages, 15 illustrations, \$22.50 cloth



At bookstores or order toll-free 1-800-822-6657.
Visa/MasterCard.

University of California Press
Berkeley Los Angeles New York Oxford

ABOUT MARK TWAIN

Abbreviations used in this bibliographical series are listed in the January/February 1990 *Mark Twain Circular*. In addition, a combination of year, letter, and number refers to an entry in my *Mark Twain: A Reference Guide* (Boston: G. K. Hall, 1977), and *ALR* refers to one of its supplements appearing in the journal *American Literary Realism*. Readers wishing to keep up to date on Twain scholarship may also wish to consult the list of other recommended bibliographic sources in the January/February 1990 *Circular*.

Thomas A. Tenney
(Editor, *MT Journal*)

ANON. "Twain's Novels Stay on School's List. Texas Parent Complains Books Racially Offensive." *Columbia (SC) State* (6 Dec. 1990): 12-A (an Associated Press dispatch). The Plano, Texas school board voted unanimously to keep *TS* and *HF* on the required list, over the objections of black parent David Perry. Perry said, however, that he respected the five hundred high school students who had circulated a petition to keep *HF*, and felt the community dialogue had been useful. Joanne Savage, a high school student, is quoted: "The book has the ability to provoke much thoughtful discussion about this problem [racism] instead of ignoring it and pretending that it is solved."

BARDES, BARBARA, and SUZANNE GOSSETT. *Declarations of Independence: Women and Political Power in Nineteenth-Century American Fiction*. New Brunswick: Rutgers UP, 1990. On *GA*: treats the portrayal (chiefly by MT's co-author Charles Dudley Warner) of Ruth Bolton as becoming a medical student out of boredom and ready to give up the profession for a aman (130-33, 138, 142). MT's depiction

of Laura Hawkins reflects his ambivalent views on women's purity and their places in politics; at about the same time he wrote of the fall of Laura Hawkins in *GA* he could argue in "The Temperance Crusade and Women's Rights" that women denied a political voice were justified in seizing other means.

BERKOVE, LAWRENCE I. "A Connecticut Yankee: A Serious Hoax." *Essays in Arts and Sciences* (U of New Haven), 19 (May 1990): 28-44. Taking issue with Henry Nash Smith's position in *Mark Twain's Fable of Progress* (1964.A5) that MT began *CY* full of faith in American industrial democracy but lost that faith, Berkove argues that Hank Morgan had such faith but MT did not. Chapters 31-34, centering on political economy, mark a change in Hank's fortunes and the direction of the book; after he needlessly and unsuccessfully tries to teach the villagers a lesson in political economy, he and King Arthur are mobbed, and the knight who rescues them seizes them as slaves. Even at this point Morgan reflects on the fact that he was sold for nine dollars and the King for seven. A *Connecticut Yankee* is a serious hoax. Hank was set up by his nature to believe in appearances and in the possibility of creating a utopia--a progressive republic ruled by pure principles of democracy and capitalist economics," but he did not understand those principles and was not himself, at heart, a democrat.

BLACK, RONALD J. "The Psychological Necessity of the Evasion Sequence in *Huckleberry Finn*." *CEA Critic*, 52.4 (Summer 1990): 35-44. Huck carries a burden of guilt, which sometimes he can expiate by his actions; but he feels guilt even when he is blameless, and shoves the guilt into his unconscious. In the final chapters, going along with Tom's charade of freeing Jim, Huck takes his own tumblers for the "crime" of helping a

slave escape, and is not disturbed by the discomforts of Jim, "who is the source of that guilt" (41).

FISHKIN, SHELLEY FISHER. "Race and Culture at the Century's End: A Social Context for *Pudd'nhead Wilson*." *Essays in Arts and Sciences* (U of New Haven), 19 (May 1990): 1-27. The stories of *HF* and *PW* were each "hijacked" by another story, of race and slavery; "Two of the most powerful and most powerfully flawed books in American literary history were the result. The subliminal subject of American race relations (discussed here at length) at the time when the books were written helps account for the unresolved contradictions and ironies in both books.

HEAD, JOHN. "It's Absurd to Accuse Twain of Being Racist." *Atlanta Journal and Constitution* (26 Nov. 1990): A-13. On attempts by David Perry, a black city councilman in Plano, Texas, to remove *HF* and *TS* from required reading lists in local schools: although Perry denies an attempt to censor, "That's not true. I suspect that the people who seek to control what other people read, hear or see believe that they are acting with the best of intentions. But having good intentions doesn't guarantee you'll be right. In this case Mr. Perry is surely wrong, for he has found Mark Twain and his books guilty of offenses they didn't commit." In fact, MT, "measured by the standards of his day, was progressive, even radical, on race. His books don't promote racism, they lampoon the stupidity of it. The first problem is that Mr. Perry doesn't get it. The second, and larger, problem is that he firmly believes students won't get it either." With proper teaching about background and context, "they'll learn something valuable from a great writer's portrait of racism's silly and downright ugly face." [John Head is black, a *Constitution* editorial writer.]

LOFRITH, ERIK. "Huck, for Short; or One Hundred Years of Solitude." *Studia Neophilologica* 62 (1990): 61-77. An extensive survey of Swedish translations of *HF*, none of them true to MT's book. They are generally shortened, with significant omissions, and bowdlerized to reduce or remove references to nakedness, chafing at authority, and moral ambiguity. Some of the translation is merely bad, but too often Huck is made to sound more educated than he really is, and Jim is sometimes made to speak in a kind of bad Swedish that makes him sound like a buffoon.

SANBORN, MARGARET. *Mark Twain: The Bachelor Years. A Biography*. New York: Doubleday, 1989 [copyright 1990]. Based largely on sources familiar to the scholar, this workmanlike account of MT's life up to his marriage in 1870 will be of interest chiefly to the general reader who wants to know more about MT.

SLOANE, DAVID E. E. "*Adventures of Huckleberry Finn*": *American Comic Vision*. Boston: Twayne, 1988. Furnishes context (including useful mention of others, among them Henry Ward Beecher, who objected to the conventional "good boy" novel on grounds of both realism and ethics), and summary of critical reception, followed by a sequential reading through "the major moments of the book" that sees the conclusion as "a symphonic elaboration of the first three chapters." Sloane carefully examines the painful issues of race and bothersome use of the word "nigger" throughout (see his index), arguing that MT unflinchingly portrayed the vicious racism of the time, "to make the reader uncomfortable" with it. "He intended to be aggressive in putting forth the most blatant symbol of that American and universal shortcoming [racism]; here, it is 'nigger'" (29).

ABOUT THE CIRCULAR. The *Mark Twain Circular* was launched in January 1987 by Thomas A. Tenney (Editor of the *Mark Twain Journal*), who edited the first issue, then passed the *Circular* baton to the present editor. An individual who pays dues to the Mark Twain Circle of America or subscribes to the *Mark Twain Journal*, or both, receives one subscription (four issues per year) to the *Circular*. The Mark Twain Circle and the *Mark Twain Journal* are independent entities, but members of the Circle enjoy a reduced subscription rate for the *Journal* (see subscription forms below).

ABOUT THE CIRCLE. The Mark Twain Circle of America was formed at an organizational meeting held at the December 1986 Modern Language Association convention in New York; the membership has since grown to approximately 350. Current officers are: President--Pascal Covici, Jr.; Vice President--David E. E. Sloane; Executive Coordinator--James D. Wilson; Executive Committee--Everett Emerson, Alan Gribben, and Susan K. Harris. Past Presidents: Louis J. Budd, Alan Gribben. Past Executive Coordinator: Everett Emerson. Although many members are academic specialists, the Circle also includes many non-academic Twain enthusiasts. The Circle is in communication with other Mark Twain organizations, including those associated with sites important in his life, and cooperates with them.

ABOUT THE JOURNAL. Founded in 1936 by Cyril Clemens, the *Mark Twain Journal* is the oldest American magazine devoted to a single author. In 1982 Mr. Clemens retired, and the *Journal* moved to its present home in Charleston, S.C., under the editorship of Thomas A. Tenney. There are two issues per year, Spring and Fall, with a new volume each year (rather than every second year, as in the past). The *Journal* tends to appear late, and begs your patient indulgence. New subscribers may wish to begin with the 1988 issues rather than 1990. Prices are on the coupon below. Paid individual members of the Mark Twain Circle should note that fact and deduct \$5.00 per year from any subscriptions to the *Journal*. Back issues from 13:1 to the present are available at \$5.00 each, postpaid (\$2.50 on orders for ten or more; pre-1983 issues are thinner than modern ones and some are badly reprinted). An index 1936-83 counts as a back issue.

<p>To: James D. Wilson Executive Coordinator, Mark Twain Circle University of Southwestern Louisiana Lafayette, LA 70504</p> <p>Please enroll me in the MARK TWAIN CIRCLE OF AMERICA. I enclose a check for \$7.00 (\$8.00 for a non-U.S. address) made out to the MARK TWAIN CIRCLE OF AMERICA.</p> <p>_____</p> <p style="text-align: center;">(printed name)</p> <p>_____</p> <p style="text-align: center;">(address)</p> <p>_____</p>	<p>To: <i>Mark Twain Journal</i> Box 1834 Charleston, SC 29402</p> <p>Please enter my subscription to the <i>Mark Twain Journal</i> at \$12.00 for 1988, \$15.00 for 1989 or 1990. Individual members of the Mark Twain Circle of America should deduct \$5.00 per year.</p> <p>_____</p> <p style="text-align: center;">(printed name)</p> <p>_____</p> <p style="text-align: center;">(address)</p> <p>_____</p> <p>LIBRARIES: \$15.00/year, no discount FOREIGN: add \$1.00/ year for postage</p>
--	--

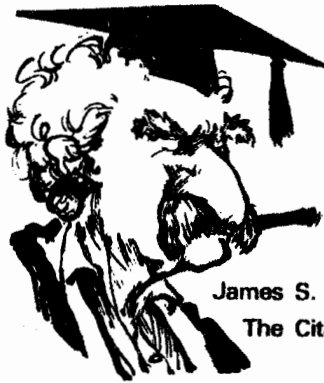
FULFILLMENT NOTICE: The Spring 1988 (26:1) issue of the *Mark Twain Journal* was mailed out to subscribers in July 1990. The next issue (26:2) is moving along well, with material in corrected proof.

LIBRARIANS: Please note in your computer that the *Mark Twain Circular* every three months provides publication information on the delayed *Mark Twain Journal*. This may help reduce avoidable claims. Your cooperation is important. Our staff is very small, and we must allocate time between responding to claims and finishing the issues due on your subscription. Avoiding needless claims will help speed the publication of issues you need.

SERIAL LIBRARIANS: The *Mark Twain Circular* is entered selectively in the annual bibliographies of the Modern Language Association and the Modern Humanities Research Association, in the *Literary Criticism Register*, in *American Literary Scholarship*, and in "A Checklist of Scholarship on Southern Literature," appearing annually in the *Mississippi Quarterly* (Spring issues). The *Mark Twain Circular* contains ongoing annotated bibliography which began in *Mark Twain: A Reference Guide* (G.K. Hall, 1977) and continued in seven issues of *American Literary Realism*, from 1977-1983. Please file and bind with your *Mark Twain Journal*.

Mark Twain Circular
J. S. Leonard, Editor
The Citadel
Charleston, SC 29409

Non-Profit Org.
U.S Postage
PAID
Charleston, SC
Permit NO. 779



Mark Twain Circular

Newsletter of the Mark Twain Circle of America
Published in Association with the **Mark Twain Journal**

James S. Leonard, Editor, **Mark Twain Circular**
The Citadel, Charleston, SC 29409

Thomas A. Tenney, Editor, **Mark Twain Journal**
The Citadel, Charleston, SC 29409

Volume 5

July-August 1991

Number 3

Circle Meets in Washington, D.C.

The Mark Twain Circle met in conjunction with the American Literature Association in Washington, D.C., over Memorial Day weekend, May 23-26, 1991. The Circle sponsored two sessions of outstanding papers at the ALA meeting, and gathered for a sumptuous banquet and business meeting at L'Escargot Restaurant on Saturday evening, May 25.

The highlight of the evening's festivities was the awarding of the Circle's first Certificate of Merit, to Walter Blair, "for long and distinguished service in elucidation of the works, thought, life, and art of Mark Twain." Carl Dolmetsch presented a tribute to Professor Blair which he and Hamlin Hill had prepared on behalf of the Circle membership.

In recognition of their visionary leadership and continued support, Louis J. Budd and Everett Emerson were unanimously elected lifetime members of the Circle. Michael J. Kiskis was elected Executive Coordinator of the Circle, and Shelley Fisher Fishkin was appointed to the Executive Committee.

At the business meeting, Everett Emerson announced that at long last, the MLA has granted the Circle associate status--which means we will

have a regular space each year on the MLA annual convention program. James D. Wilson, concluding his term as Executive Coordinator, announced that membership in the Circle now stands at 362.

James D. Wilson
U. of Southwestern Louisiana

Upcoming Circle Gatherings

1. The Modern Language Association '91 program is now set, as required by MLA deadlines. Alan Gribben, Susan Harris, and Judith Y. Lee will be giving the papers. The Circle will also hold a business meeting at 10:15 a.m. on Saturday, December 28, in the Cypress Room of the Hilton.

In addition to papers on the MLA official program, the Circle will sponsor two sessions of four or five discussable presentations each. The idea is that graduate students and other beginning scholars, as well as academically unaffiliated others interested in Mark Twain or in members of his Circle, have a forum in which to present interests, ideas, or questions. These sessions will be held in the suite that the Circle will sponsor along with Tom Tenney and the *Mark Twain Journal*. This

notice constitutes a call for proposals. Send them to President Pascal Covici, Jr., 10124 Champa Drive, Dallas, TX 75218. We anticipate that each presentation will be limited to 15 minutes, and may well run to less. The times for the sessions will appear in the *Circular* after we know when our MLA-scheduled session will occur. Presenters, and titles of presentations, will be given official notice in the *Circular*. This should have relevance for travel expenses to MLA.

2. Sessions to be conducted at the ALA meeting in San Diego in May of 1992 are now in the planning stage. One session will focus on problematic themes regarding women in the Twain canon and in Twain's own life. One or two 20-minute presentations remain to be selected. Please send papers or proposals to Vice-President David E. E. Sloane, 4 Edgehill Terrace, Hamden, CT 06517. Another session will have as its subject works of the 1890s; papers on *The American Claimant*, on shorter works of fiction, and on political writings would be welcome. One place on each of the panels will be reserved for papers by younger scholars who have neither published a book nor previously read a paper at MLA or ALA. We would appreciate receiving abstracts from such scholars, the sooner the better.

3. Hurrah! Thanks to the unswerving energy and devotion of Everett Emerson, the Mark Twain Circle of America is now an "Allied Organization," with full associated status with the MLA. The ramifications of this are at least two.

First, at the 1992 MLA in New York City, we will have two sessions for papers, as well as a general business meeting. In the fall of 1991, David Sloane will be putting out a call for papers. He would welcome suggestions for topics now.

Second, at our next ALA meeting (spring of 1992), we may well want to amend the by-laws so that we elect our officers at the ALA in May or

June rather than at the MLA in December. Please send any reactions you have about this to Pascal Covici.

Pascal Covici, Jr. David E. E. Sloane
President, MTCA Vice Pres., MTCA
10124 Champa Dr. 4 Edgehill Terrace
Dallas, TX 75218 Hamden, CT 06517

Call for Papers

The Elmira College Center for Mark Twain Studies at Quarry Farm announces a call for papers "On the State of Mark Twain Studies" for a conference to be held in August 1993. Co-chaired by Professors Alan Gribben and Susan K. Harris, the conference will salute the lifetime achievements of Professor Louis J. Budd and celebrate the Center's tenth anniversary. We invite papers on:

Mark Twain and Short Fiction
Mark Twain and Sexuality
Mark Twain and His Contemporaries
Mark Twain's "Home Circle"
Critical Approaches to Mark Twain
Collecting Mark Twain
Negotiating Mark Twain: The Anxiety of Influence

Research & Revision Opportunities
Ten-page papers suitable for twenty-minute presentation should be submitted to Professor Darryl Baskin, Director, Center for Mark Twain Studies, Elmira College, Elmira, NY 14901, no later than February 1, 1993. Papers will be juried on a blind basis; any notes that might identify the author should be listed on a separate sheet.

Index to Mark Twain: A Reference Guide Updates

The following listings conclude Wesley Britton's index to the supplements, through 1988, of Thomas A. Tenney's 1977 *Mark Twain: A Reference Guide*. The indexed material includes addenda contained (but not indexed)

in the *Reference Guide* itself, annual supplements in *American Literary Realism* (1977-83), supplements in the "About Mark Twain" section of the *Mark Twain Circular* (1987-88), and other material (not necessarily related to the *Reference Guide*) in the 1987 and 1988 volumes of the *Circular*. See Britton's instructions ("Using This Index") in the May-June 1990 *Circular* for explanation of abbreviations and other details of notation.

Overland Monthly AMT July 88
Overland, Orm (Ad.) 404
"Overrated Book, The" (78) 208
Owens, Albert (77) 350
Owsley, William (82) 30
Oxford (see also England) (80) 179;
(81) 166

Pacific Commercial Advertiser CIRC
June 87, p. 1
Paderewski, Ignace (83) 178
Paige Typesetter (77) 371; (78) 196,
204, 218; (80) 209; (83) 172
Paine, Albert Bigelow (77) 336-39,
384, 392, 393, 404, 409; (78) 173,
176, 178, 194, 208; (79) 195, 196,
201, 211, 253; (80) 175, 176, 193;
(81) 186; (82) 27; (83) 173, 175;
(Ad.) 406; CIRC May 88, p. 1
Paris, France (see also France) (80)
203
Park, Edwin (79) 273
Parkman, Francis (77) 366
Parks, Edd Winfield (79) 212
Parsons, Coleman (77) 411
"Parting of the Ships, The" (poem by
MT) (79) 195
patents (as subject) (79) 201
Paul, Roman (Ad.) 397
Pauly, Thomas (Ad.) 407
Paxon, Katherine (77) 383
Pearce, Roy Harvey (Ad.) 398
Pellowe, William S. (80) 197
Pennington, James W. C. (82) 29
Pennsylvania (steamboat; see also
steamboats) (83) 212
Perry, Thomas S. (80) 189
Personal Recollections of Joan of Arc
(77) 331, 333, 338, 339, 342, 345,

347, 389, 398, 406; (78) 168-69,
177, 204; (79) 184, 202, 203,
240, 241, 256-57, 267; (80) 181,
187-88, 210, 222; (82) 7, 8, 13.
44; (83) 167
"Petrified Man, The" (78) 204
Phelps, William Lyon (79) 191, 195
Phelps, William Walter (78) 170
Phillipines (77) 388
Phoenix, John CIRC Nov. 87, p. 2
Picard, Heloise (80) 194
Pierce, Edward (83) 168
Pierce, Grace (77) 348
Pike, Gustavus D. (77) 330
Pinsker, Sanford AMT July 88
plays by MT (see also *Gilded Age*; *Ah
Sin*; *Simon Wheeler*; *Meisterschaft*;
In Purgatory) (81) 178; (82) 17-18
Plessner, Monika (Ad.) 402
Poe, Edgar Allan (79) 193; (82) 37;
AMT Dec. 87
Pollock, Channing (80) 187
Pond, James B. (78) 170; (79) 186;
(80) 170, 174, 177
Pope John Paul I (79) 262
Pott, James (77) 333
Potter, Edmund (77) 380; AMT Sept. 88
Pribek, Thomas AMT July 88
Priestly, J.B. (77) 352
Prince and the Pauper, The (77) 338,
341, 348, 353, 356, 405, 406, 410;
(78) 163, 217; (79) 183, 197, 207,
217, 230, 232, 236, 240, 267; (80)
208, 210; (81) 174, 186; (83) 191,
199; AMT July 87, July 88
Prince and the Pauper (play) (81) 178
Prince and the Pauper (movie) (79)
254
printer (MT as; see also Hannibal)
(83) 193
"Private History of a Campaign That
Failed" (83) 185; (Ad.) 401
"Private History of the 'Jumping
Frog' Story" (see "Celebrated
Jumping Frog")
Pudd'nhead Wilson (also see *Those
Extraordinary Twins*) (77) 331,
338, 346-49, 353, 357-59, 364,
383, 388, 395, 402, 405, 406; (78)
167, 187, 191, 201, 202, 205, 210,
214, 216; (79) 184, 204, 218, 229,
236, 237, 246, 249, 256, 257-58,
264, 275; (80) 202, 205, 206, 209,
220, 222; (81) 169, 174, 186, 194;
(82) 6, 7, 19, 22, 29, 39; (83)

- 185-86, 189; (83) 197, 209, 213;
(Ad.) 398, 401, 405; AMT May 87,
Aug. 87, Sept. 87, March 88, July
88
Pudd'nhead Wilson (play) (80) 193;
(82) 14-15
Pullen, John J. CIRC Nov. 87, p. 3
"Punch, Brothers, Punch" (78) 206;
(79) 181, 201
- Quaife, M.M. (79) 219
Quaker City, The (see also *IA*, *ALTA*,
Fairbanks, Mary) (81) 180; (83)
221; April 87, Sept. 88
Quarles, John A. (78) 197; (79) 228
Quarry Farm (see Elmira, NY)
Quercus, P.E.G. (77) 343
Quick, Dorothy (79) 213
Quincy, Illinois (79) 270
Quirk, Thomas AMT Dec. 87
- racism (82) 36; AMT July 88
Radical Club (77) 330
Railton, Steven AMT Aug. 87
Raimo, John (80) 212
Ramsey, Robert L. (Ad.) 397
Rank, Otto (82) 16; (Ad.) 403
Rao, B.R. (Ad.) 402
Ray, David (77) 353
Raymond, John T. (see also *Gilded Age*
(play) and Sellers, Col.) (80)
170, 171
Read, Opie (79) 207; (80) 216; (81)
189; (83) 174
Redding, Connecticut (see "Storm-
field")
Redpath, James (78) 210; (80) 174
Reed, Thomas (77) 336; (79) 189; (82)
10
Reid, Capt. Mayne (81) 171
Reiss, Edmund (Ad.) 399
Regan, Robert (77) 405
religion (also see BIBLE, Calvinism)
(79) 267; (80) 177, 197, 198; (82)
18; (Ad.) 400
Renza, Louis A. AMT Dec. 87
Rest, Jaime (Ad.) 401
Rice, Alice Hegan (82) 43
Rice, Clarence (77) 383
Richards, David AMT Sept. 88
Richardson, Thomas AMT July 88
Richmond, Marion AMT Jan. 88
Ridge, W. Pett (Ad) 397
Rigas, Thomas AMT Jan. 88
Rigaux, Jacques (Ad.) 403
- Rising, Franklin Samuel (77) 347;
(78) 165; (83) 203
rituals, social (83) 197, 216
Roberts, Elizabeth Madox (79) 256
Robertson, John Ross (79) 252
Robinson, Douglas AMT June 87
Robinson, Fred C. (79) 242
Robinson, Forrest G. AMT May 87, July
88; CIRC Nov. 87, p. 3
Robinson, Henry C. (79) 238
Robinson, Virginia (Ad.) 403
Robinson, William (77) 377
Rocha, Guy Louis CIRC Nov. 87, p. 3
Rockefeller, Nelson (79) 274
Rodgers, Paul C. CIRC Nov. 87, p. 3
Roemer, Kenneth (Ad.) 405
Rogers, Franklin (78) 197; (Ad.) 404
Rogers, Henry H. (77) 331, 336, 340,
365, 383, 391, 402; (78) 178, 180,
184, 189; (79) 189, 190, 205, 242;
(80) 194; (82) 10, 38-39; (83)
186; (Ad.) 402, 404
Rogers, Mary (79) 268
Rogers, W. A. (77) 338
Rogers, Will (79) 210
Rohde, Regitze (Ad.) 407
Romm, A.C. (Ad.) 398
Roosevelt, Franklin D. (78) 186; (80)
181
Roosevelt, Theodore (79) 226; (80)
181; (81) 170
Rosen, Robert C. AMT May 88
Ross, Janet (77) 336
Roth, Samuel (77) 339
Roughing It (see also Indians as sub-
ject, Nevada, California, Ter-
ritorial Enterprise, San Fran-
cisco) (77) 334, 338, 356, 371,
377, 385, 386, 390; (78) 212, 213;
(79) 203, 209, 244, 245, 249-51,
257, 276; (80) 208, 215; (81) 191;
(82) 18, 27, 36-37; (83) 170, 217;
(Ad.) 397, 403, 404, 407; AMT July
87, Oct. 87, July 88, Sept 88;
CIRC Nov. 87, p. 3, March 88, p. 1
Rourke, Constance (79) 218
Rowlette, Robert CIRC Nov. 87, p. 3
Rubin, Louis (77) 355, 378, 392, 393;
(82) 28; (Ad.) 399; AMT June 87
Russia (and Russian criticism of MT)
(80) 176, 194, 195; (Ad.) 403
Routledge, George (77) 330
Rutherford, Mildred (78) 167
- St. Louis, Mo. (also see Hannibal,

- Mo.) (79) 235; (80) 199; (83) 179
 Saint-Pierre, Marcel (Ad.) 397
 Salinger, J.D. (77) 353, 362, 397;
 (78) 204; (79) 276; (80) 198; (81)
 182; (Ad.) 405
 Salt Lake City, Utah (see *Daily
 Tribune*)
 Samarin, R. (77) 345
 Samossoud, Clara Clemens
 Gabrilowitsch (77) 350, 390, 392,
 397; (78) 185, 187, 193, 216; (79)
 192, 201, 221, 271; (80) 182, 187,
 191, 194, 195, 203, 208, 217; (81)
 180, 186; (82) 38; (83) 188, 203;
 (Ad.) 406; AMT April 87; CIRC Feb.
 87, pp. 2-3, May 87, p. 1
 Samossoud, Jacques AMT April 87
 Sanborn, John E. (82) 32
 Sandburg, Carl (77) 344, 394
 Sandwich Islands (see also "Our Fel-
 low Savages," *Hornet*, "43 Days in
 an Open Boat") (78) 181; (79) 207,
 248, 250; (81) 181, 190; (82) 32;
 (83) 175, 2034; (Ad.) 400; CIRC
 June 87, pp. 1-3
 San Francisco (see also California,
Daily Bee, *Daily Union*) (77) 391;
 (79) 225; (81) 170-71; (83) 183;
 AMT Sept. 88 CIRC Nov. 87, p. 3,
 Nov 8, p. 4
San Franciscan, *The* (magazine) CIRC
 July 88, pp. 1-3
 Santayana, George (77) 346; (79) 236
 Sargent, Mrs. John T. (77) 330
 Sargent, Mark L. AMT Jan. 88
 Sattelmeyer, Robert AMT March 87, May
 87; CIRC Nov 88, p. 4
 Saunders, Mary Ann ("Tip") (82) 43
 Savage Club (78) 174, 175, 176; (80)
 188, 189; (81) 166
 Sawey, Orlan (Ad.) 403
 Sawicki, Joseph AMT July 88
Scarlet Letter, *The* (also see Haw-
 thorne, Nathaniel) (79) 189; (80)
 201
 Schäfer, Jürgen (Ad.) 405; (77) 378
 Schirer, Thomas AMT Sept 87
 Schissinger, Sigmund AMT March 88
 Schmidt, Paul CIRC Nov. 87, p. 3
 Schmidt-Hidding, Wolfgang (Ad.) 398
 Schmitz, Neil AMT July 88; CIRC Nov.
 87, p. 3
 Schnabel, Artur (83) 182
 Schubert, Karl (Ad.) 407
 Scott, Harold (79) 206
 Scott, Sir Walter (78) 206, 207; (80)
 178
 Schönfelder, Karl-Heinz (Ad.) 397
 Sears, Robert R. (77) 406
 Seelye, John (78) 199, 203, 212; (80)
 201, 222; (83) 208
 Seigle, Natalie (83) 220-21
 Selby, P.O. (77) 365; (79) 265; (Ad.)
 402
Self-Pasting Scrapbook (80) 206
 "Sellers, Col." (also see GA, AC)
 (77) 375, 383, 393; (79) 181, 217,
 235; (80) 206; (81) 172
 Sellers, Isaiah (77) 386, 399; (78)
 179; (81) 174; (83) 195-96
 Sempers, Charles (77) 333
 Seranac Lake, New York (83) 188
 Seton, Ernest (83) 178
 Severance, Solon and Emily (see also
 Fairbanks, Mary, *Quaker City*) (81)
 180; (83) 187
 Sewell, David R. AMT Sept 87
 sexuality in MT's works (79) 263;
 (80) 209; AMT Sept 88
 Shakespeare, William (see also *Is
 Shakespeare Dead?*) (77) 343, 401;
 (79) 201; (80) 199; AMT May 88,
 July 88
 Shayon, Robert (77) 348
 Shaw, George Bernard (78) 185, 186;
 (79) 247; (80) 213; (81) 184, 185
 Shaw, Lord, of Dunfermline (83) 166
 Shaw, Mary (77) 331
 Shepard, Odell (77) 355
 Shepperson, William (Ad.) 403
 Sherman, Stuart P. (80) 173, 180
 Sherwood, Robert (82) 13
 Shinn, Everett (77) 375; (80) 190
 Shrubb, Peter AMT July 88
 Shults, Donald (Ad.) 403
 Shutt, Randall (Ad.) 408
 "Siamese Twins, The" (79) 236
 Sielewicz, Bronia (77) 345
 Simon, John (Ad.) 400
 Simmons, Edward (77) 338
Simon Wheeler, Detective (78) 195;
 (79) 262; (81) 178
 Sinclair, Andrew (Ad.) 401
 Sinclair, May (82) 14
 Singleton, Ralph H. (82) 15
 1601 (77) 339, 354, 355; (79) 189;
 (80) 195; (83) 207; AMT April 87
 Skandera, Laura CIRC Feb. 87, p. 1-
 3, May 87 p. 1
Sketches New and Old (78) 212; (79)

- 205
- Skrine, Francis H. (80) 175
 Skvorecky, Josef AMT Jan. 88
 Sladen, Douglas (79) 198
 Sloane, David E.E. (77) 393, 406;
 (79) 275; (82) 45; (83) 221; AMT
 Jan. 88
 Smarr, Sam (82) 30
 Smith, F. Hopkinson (77) 331
 Smith, Henry Nash (77) 348, 354; (79)
 225, 235, 266; (80) 207; (Ad.)
 398, 401; AMT April 87, Dec. 87;
 CIRC Nov. 87, p. 3
 Smith, Julie CIRC Nov 88, p. 4
 Smith, Laura (Ad.) 405
 Snodgrass, Quintus Curtius (79) 270
 Snodgrass, Thomas Jefferson (80) 218;
 (82) 19
 Social Darwinism (see also Spencer,
 Herbert) (79) 235
 Society for Psychical Research (see
 also spiritualism) (79) 182, 229-
 30; (80) 178; (83) 216, 217
 "Some Thoughts on the Science of
 Onanism" (see "Stomach Club")
 "Song Composed in a Dream" AMT Oct 87
 Soule, George (79) 198-99
 South Africa (77) 392, 411; (78) 216
 Spector, Robert D. (Ad.) 400
 Spencer, Herbert (79) 235
 spiritualism (see also Society for
 Psychical Research) (83) 216, 217
 Stahl, John AMT July 88
 Stanley, Henry M. (77) 392; (Ad.) 407
 Starr, William Ireland (80) 193
 steamboats (see also Alexander Scott;
 Batavia; John H. Dickey; Pennsyl-
 vania) (83) 191, 195
 Stedman, Edmund (82) 11
 Steed, William T. (78) 167, 183; (80)
 173
 Stegner, Wallace (77) 352
 Stein, Gertrude (77) 344
 Steinbeck, John (77) 382; (79) 254
 Steinmann, Anne (77) 350
 Sterne, Lawrence (83) 200
 Stevens, E. W. (77) 393
 Stevenson, Robert Louis (77) 330;
 (78) 178, 201; (79) 266
 Stewart, William Morris (78) 195;
 (79) 193; (81) 171
 Stratton-Porter, Gene (82) 17
 "Stirring Times in Austria" (79) 273
 Stockton, Frank (77) 333
 "Stolen White Elephant, The" (77)
 395, 410; (78) 163; (79) 181
 "Stormfield" (79) 193; (80) 177, 193
 "Story of the Bad Little Boy, The"
 (81) 188
 "Story of the Good Little Boy, The"
 (81) 188
 Stovall, Floyd (79) 215
 "Stomach Club, The" (78) 205; (80)
 197; (82) 46; (Ad.) 408; AMT April
 87
 Story, Douglas (81) 165
 Stowe, Harriet Beecher (77) 359, 387;
 (78) 169, 170; (79) 189, 234, 251,
 263
 Stowe, Lyman Beecher (80) 194
 Suvin, Darko AMT May 88
 Swanbrow, Diane CIRC May 87, p. 1
 Swanson, Mildred (77) 359, 361, 363,
 377
 Sweden (and Swedish criticism of MT)
 (78) 214, 220; (79) 239; (Ad.) 403
 Talbott, Linda H. (Ad.) 402
 Tanner, Tony (Ad.) 399
 Tarkington, Booth (77) 338, 397; (79)
 204, 222
 Taylor, Annie Elizabeth (77) 379;
 (80) 179
 Taylor, Coley (83) 208
 Taylor, Eva AMT Jan. 88
 Taylor, Howard (81) 174
 telepathy (see also spiritualism)
 (81) 167, 170, 183, 185; (83) 218;
 (Ad.) 407
 Tennyson, Alfred Lord (79) 228
 Territorial Enterprise (see also De
 Quille, Dan; Goodman, Joseph;
 Daggett, Rollin; Davis, Sam;
 McEwen, Arthur; Ward, Artemus)
 (77) 336, 374; (78) 178; (79) 209,
 225, 232, 275; (80) 199, 208; (81)
 162, 163-64, 169-70, 174; (82) 33;
 (83) 211; (Ad.) 398; AMT Oct 87;
 CIRC July 88 p. 1
 Terry, Clifford (Ad.) 404
 Tesla, Nikola (82) 43
 Thaw, Henry K. AMT Sept 88
 theater, MT AMT Sept 87
 "Third World, the" (80) 206
 "30,000 Bequest, The" (79) 273; (82)
 38; (83) 205
 Thompson, M. Jeff (79) 217
 Those Extraordinary Twins (see also
 PW) (77) 348; (78) 192; (79) 264;
 (82) 22, 29

- "Thousand [Million] Pound Note" (film) (83) 187
- Thurston, Norman (79) 267
- time in MT's novel's (83) 201
- Tisdell, Joseph (80) 182
- Todd, William (77) 366
- Tolstoi, Alexsei Nikolaevich (79) 199
- Tomish, John (Ad.) 403
- Tom Sawyer, The Adventures of* (77) 354, 358, 338, 361, 373, 381, 393, 396 402, 406, 407, 411; (78) 162; (78) 186, 190, 200, 201, 204, 211; (79) 189, 194, 205, 211, 217-19, 244-45, 255, 260; (80) 185, 186, 206, 216; (81) 174-76, 184, 188; (82) 4, 21, 23, 26-29; (83) 169, 184, 194, 198, 208, 214-15, 219; (Ad.) 398, 400, 401, 403, 404; AMT Jan. 88, July 88
- Tom Sawyer (as character by other authors) (80) 184; (82) 38
- Tom Sawyer* (movie) (79) 255; (80) 180, 200; (81) 174-75
- Tom Sawyer* (plays) (79) 242; (80) 183, 191; (83) 168-69
- Tom Sawyer Abroad* (77) 387, 397, 403; (79) 183, 204, 244; (80) 216-17; (83) 215; (Ad.) 408; AMT July 88
- Tom Sawyer, Detective* (77) 379, 386; (78) 169, 201; (79) 185, 214; (80) 216-17; (83) 215
- "To the Person Sitting in Darkness" (79) 273; (81) 176
- Towers, Tom (Ad.) 403, 407; AMT March 88
- Townsend, James ("Lying Jim" aka "Captain Jim") AMT Sept 88; CIRC July 88, p. 2
- Tozer, Basil (77) 339
- Train, George Francis (79) 195
- Tramp Abroad, A* (77) 332, 337, 338, 343; (78) 162, 190, 207; (79) 243, 244; (80) 202, 223-24; (82) 5; (83) 169; (Ad.) 400; AMT Sept 87, July 88
- transcendentalism (also see Emerson, Ralph Waldo) (81) 184
- translations (see also language listings) (80) 212-13
- Trilling, Lionel (80) 191, 196
- Trollope, Anthony (79) 219
- "True Story, A" (see also Cord, Mary Ann) (80) 221; (82) 33, 38; (83) 170
- Truman, Harry S. (77) 367; (79) 222
- Trumbell, J. Hammond (79) 221
- Tuckey, John S. (79) 248; (80) 222; (Ad.) 404; CIRC Nov. 87, pp. 1-2, Dec. 87, pp. 1-3
- Turner, Arlin (78) 193
- Turner, Frederick Jackson (83) 217
- Twitchell, Joseph (77) 338, 383, 397; (78) 212; (79) 189, 196, 198, 212, 214; (81) 190; (82) 25; (83) 173, 216
- Tyson, A.H. (83) 179
- Ukrainian translation and criticism (Ad.) 404
- Underhill, C.M. (80) 179, 217
- Underhill, Charles S. (80) 179
- Underhill, Irving (80) 179
- Union Catalog of Clemens Letters* AMT June 87
- Vagabond, The* (79) 189
- Van Aken, E.M. (77) 332
- Vancura, Z. (Ad.) 399
- Vanderbilt, Cornelius (80) 207
- Van Der Beets, Richard (Ad.) 402
- Virginia City, Nev. (see Nevada)
- Van Doren, Carl (80) 187
- Van Doren, Mark (79) 206, 209, 218; (80) 185; (82) 29
- Van Dyke, Henry (77) 338; (79) 189, 196, 204; (80) 174, 203; (83) 173
- Vidal, Gore (80) 201
- Vonnegut, Kurt, Jr. (77) 408; (78) 205; (79) 271, 276; AMT March 88
- Wadleigh, G.R. (79) 194
- Wagenknecht, Edward (79) 212, 216; (80) 186; (Ad.) 399, 400
- Wagner, Richard (also see music) (83) 178-79
- Wain, John (77) 347
- Walker, Franklin CIRC Nov. 87, p. 3
- Watkins, Louise A. (83) 173
- Waldorf, Mrs. (Lady Astor) (79) 210
- Walpole, Hugh (77) 338
- "Wapping Alice" (81) 191; AMT Sept 88
- Ward, Artemus (also see literary comedians) (77) 365, 393; (78) 176, 186; (79) 180, 220, 258, 274, 275; (81) 162-63; (82) 31; CIRC Nov. 87, p. 3
- Ward, Edwin (79) 202
- Warner, Charles Dudley (see also *Gilded Age, The*) (77) 362, 370, 374; (78) 212; (79) 189, 198, 251;

(80) 221; (82) 25; (83) 169, 174
 "War Prayer, The" (80) 183
 Warren, Robert Penn (79) 267
 Warth, Robert D. AMT Sept 88
 "Was it Heaven? Or Hell?" (83) 179
 Watterson, Henry (79) 196; (83) 173
 weather (as subject by MT) (79) 249
 "Weaver's Beam, A" (poem by MT) (Ad.)
 408
 Weaver, Richard (77) 363
 Webster, Charles (78) 213
 Webster, Samuel Charles (83) 180-81
 Wecter, Dixon (79) 219
Weekly Occidental (78) 211; (79) 183
 Weeks, Robert (Ad.) 407
 Weintraub, Rodelle (Ad.) 407
 Wells, Daniel A. AMT July 88
 Wells, H.G. (77) 344, 381, 382
 Welland, Dennis (77) 368
 Werge, Thomas (Ad.) 407
 West, Victor Royce (Ad.) 397
 West Virginia (Clemens' family
 genealogy) (79) 233; (81) 183
What Is Man? (77) 341, 349, 398; (78)
 199, 201; (79) 248, 252, 258, 259;
 (80) 175; (82) 11-12, 21; (Ad.)
 407
 "What Paul Bourget Thinks of Us" (81)
 168
 Whitlock, William Wallace (79) 188
Whirlwind, The (79) 189
 White, Stanford AMT Sept 88
 White, William Allen (77) 338; (79)
 204; (81) 175
 Whitley, John S. AMT Aug 87
 Whitman, Sidney (81) 170
 Whitman, Walt (77) 337, 345, 350,
 376; (78) 165, 189, 192; (79) 209,
 228-29; (Ad.) 398; AMT Sept 88
 "Whittier Birthday Speech" (77) 344,
 366; (79) 215, 217; (80) 176, 189;
 (81) 182; (83) 174-75, 188-89; AMT
 Sept 87
 Wholihan, John W. (79) 218-19
 Wiggin, Kate Douglas (77) 338, (79)
 204; (83) 173, 212
 Wight, Laura Wilder (83) 175
 Wilcox, Earl (Ad.) 404
 Wilder, Marshall P. (81) 162
 Wildman, Edwin (77) 332
 Wilhelm II (Kaiser) (79) 231

Williams, George AMT Nov. 87, May 88
 Williams, Odell (77) 331
 Williams, Philip (Ad.) 401
 Williams, Stanley T. AMT July 88
 Williams, True (80) 208, 210
 Williamsport, PA AMT Oct 87
 Willoughby, John (Ad.) 400
 Wills, Gary (77) 408
 Wilson, Edmund (77) 363; (79) 212,
 217
 Wilson, James D. (Ad.) 407; AMT May
 87
 Wilson, Woodrow (80) 176
 Wolf, Don M. (77) 348
 Wolff, Cynthia (82) 29
 women (as subject matter by MT--see
 also "Mrs. McWilliams") (79) 244-
 45; (80) 201-02, 203, 208; (83)
 221
 "Wonderful Potato, A" AMT May 88
 Wood, M.E. (77) 334
 Woolf, S.J. (77) 341
 Wolfe, Thomas (Ad.) 408
 Wouk, Herman (79) 247
 Wright, William (see De Quille, Dan)

 "Yankee Story, A" (79) 194
 Yates, Edmund (82) 4-5
 Yates, Paulene (77) 344
 Yoshida, Hiroshige (Ad.) 401

 Zall, P.M. AMT April 87
 Zangwill, Israel (80) 174, 180-81
 Zurier, Melvin (82) 42

Dates to Circle

October 12-13, 1991. Second Annual
 Fall Twain Symposium, "Mark Twain:
 Issues of Race and Prejudice," at the
 Mark Twain Memorial in Hartford, CT.

December 27-30, 1991. MLA Convention
 in San Francisco. David E. E. Sloane
 has arranged a session for the Cir-
 cle. Presenters: Alan Gribben, Susan
 K. Harris, and Judith Y. Lee; respon-
 dents: Andrew Jay Hoffman and Suzi
 Asher.

ABOUT MARK TWAIN

Abbreviations used in this bibliographical series are listed in the January/February 1990 *Mark Twain Circular*. In addition, a combination of year, letter, and number refers to an entry in my *Mark Twain: A Reference Guide* (Boston: G. K. Hall, 1977), and *ALR* refers to one of its supplements appearing in the journal *American Literary Realism*. Readers wishing to keep up to date on Twain scholarship may also wish to consult the list of other recommended bibliographic sources in the January/February 1990 *Circular*.

Thomas A. Tenney
(Editor, *MT Journal*)

BRIDEN, EARL F. "Kemble's 'Specialty' and the Pictorial Countertext of *Huckleberry Finn*." *Mark Twain Journal* 26.2 (1988): 2-14. Edward Windsor Kemble was twenty-three and relatively inexperienced when he was commissioned to draw the illustrations for *HF*. He had already published a number of drawings in the old *Life* and *The Daily Graphic*, some of them comic but not necessarily offensive portrayals of black subjects. Under pressure of deadlines and sometimes without an opportunity to see the text he was illustrating, Kemble often resorted to stereotypes in *HF*. "In retaining Kemble, Twain was in effect authorizing a pictorial narrative which runs counter to major implications of his verbal text. For Kemble's drawings re-write the Huck-Jim relationship by reducing Jim, whom Huck gradually recognizes as an individualized human being, to a simple comic type, a stock figure in an emerging pictorial tradition." As

his career developed, Kemble said he became established "as a delineator of the South, the Negro being my specialty." He created the Gold Dust Twins once seen on boxes of washing soda, and in 1898 published two books titled *Comical Coons* and *A Coon Alphabet*; the texts of these books are as offensive as their titles, though many (but not all) of the drawings are attractive and sympathetic.

WARREN, JOYCE W. "Old Ladies and Little Girls: Mark Twain." *The American Narcissus: Individualism and Women in Nineteenth-Century American Fiction* (New Brunswick: Rutgers UP, 1984), 149-85. This generally follows familiar published thinking: MT insisted on purity and subservience in his ideal woman, was more prudish than even James or Howells and sub-merged his wife and daughters, but respected women's intelligence and supported their right to vote (though fearing politics would corrupt "pure" women). "Twain's failure to deal with sex in his fiction, then, was determined primarily by his concern to preserve the purity of the female image--and thus her selfless dependence--and his concern to preserve his own reputation. Both of these factors derive from his principal concern: the self."

Publication of the *Mark Twain Circular* is funded in part through a grant from the Citadel Development Foundation.

Thanks to student assistant Mark Little (The Citadel) for his help in preparing this issue of the *Circular*.



Elmira College Center for Mark Twain Studies at Quarry Farm

Proudly Announces

Quarry Farm Papers, No. 3 in a Series

Lorraine Welling Lanmon

Quarry Farm: A Study of the "Picturesque"

A prize-winning essay that draws upon a variety of sources (including letters of summer resident Mark Twain, and of the Langdon and Crane families; land surveys, deeds, and maps; histories of Elmira, the Langdon, Crane, and Clemens families; and literature published by eighteenth and nineteenth century aestheticians, architects and landscape gardeners) to show that the house and grounds at Quarry Farm were carefully wrought according to the picturesque aesthetic to create a virtually textbook expression of the *ferme ornée*, or ornamented farm in upstate New York. Thirty pages of text, including notes and fourteen illustrations, cast fresh light on the aesthetic environment Mark Twain found so congenial to his own creative efforts over the course of the twenty summers in which he wrote at Quarry Farm.



Also available:

Quarry Farm Papers, No. 1. Henry Nash Smith, *"How True Are Dreams?": The Theme of Fantasy in Mark Twain's Later Work.* Commemorative Foreword by Alan Gribben.

Quarry Farm Papers, No. 2. John S. Tuckey, *"Mark Twain: The Youth Who Lived on in the Sage."* Commemorative Foreword by Howard Baetzhold.

Quarry Farm Papers are \$5/copy: handling and postage included. Make checks payable to the Center for Mark Twain Studies and mail to the Center for Mark Twain Studies, Elmira College, Elmira, New York 14901.

QFP, No. 1 (Smith, *"How True Are Dreams?"*) No. of Copies _____

QFP, No. 2 (Tuckey, *"Mark Twain"*) No. of Copies _____

QFP, No. 3 (Lanmon, *"Quarry Farm"*) No. of Copies _____

Total amount enclosed (No. of copies x \$5)

Name: _____

Address: _____

City: _____ State: _____ Zip: _____

ABOUT THE CIRCULAR. The *Mark Twain Circular* was launched in January 1987 by Thomas A. Tenney (Editor of the *Mark Twain Journal*), who edited the first issue, then passed the *Circular* baton to the present editor. An individual who pays dues to the Mark Twain Circle of America or subscribes to the *Mark Twain Journal*, or both, receives one subscription (four issues per year) to the *Circular*. The Mark Twain Circle and the *Mark Twain Journal* are independent entities, but members of the Circle enjoy a reduced subscription rate for the *Journal* (see subscription forms below).

ABOUT THE CIRCLE. The Mark Twain Circle of America was formed at an organizational meeting held at the December 1986 Modern Language Association convention in New York; the membership has since grown to approximately 350. Current officers are: President--Pascal Covici, Jr.; Vice President--David E. E. Sloane; Executive Coordinator--Michael J. Kiskis; Executive Committee--Alan Gribben, Susan K. Harris, and Shelley Fisher Fishkin. Past Presidents: Louis J. Budd, Alan Gribben. Past Executive Coordinators: Everett Emerson, James D. Wilson. Although many members are academic specialists, the Circle also includes many non-academic Twain enthusiasts. The Circle is in communication with other Mark Twain organizations, including those associated with sites important in his life, and cooperates with them.

ABOUT THE JOURNAL. Founded in 1936 by Cyril Clemens, the *Mark Twain Journal* is the oldest American magazine devoted to a single author. In 1982 Mr. Clemens retired, and the *Journal* moved to its present home in Charleston, S.C., under the editorship of Thomas A. Tenney. There are two issues per year, Spring and Fall, with a new volume each year (rather than every second year, as in the past). The *Journal* tends to appear late, and begs your patient indulgence. New subscribers may wish to begin with the 1988 issues rather than 1991. Prices are on the coupon below. Paid individual members of the Mark Twain Circle should note that fact and deduct \$5.00 per year from any subscriptions to the *Journal*. Back issues from 13:1 to the present are available at \$5.00 each, postpaid (\$2.50 on orders for ten or more; pre-1983 issues are thinner than modern ones and some are badly reprinted). An index 1936-83 counts as a back issue.

<p>To: Michael J. Kiskis Executive Coordinator, Mark Twain Circle Empire State College (SUNY) Saratoga Springs, NY 12866</p> <p>Please enroll me in the MARK TWAIN CIRCLE OF AMERICA. I enclose a check for \$7.00 (\$8.00 for a non-U.S. address) made out to the MARK TWAIN CIRCLE OF AMERICA.</p> <hr/> <p>(printed name)</p> <hr/> <p>(address)</p> <hr/>	<p>To: <i>Mark Twain Journal</i> Box 1834 Charleston, SC 29402</p> <p>Please enter my subscription to the <i>Mark Twain Journal</i> at \$12.00 for 1988, \$15.00 for 1989, 1990, or 1991. Individual members of the Mark Twain Circle of America should deduct \$5.00 per year.</p> <hr/> <p>(printed name)</p> <hr/> <p>(address)</p> <hr/> <p>LIBRARIES: \$15.00/year, no discount FOREIGN: add \$1.00/ year for postage</p>
---	--

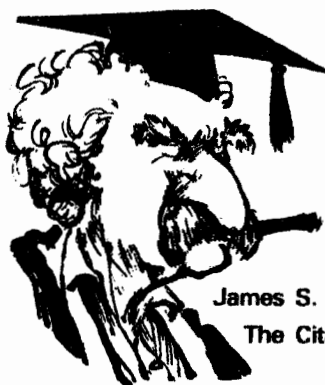
FULFILLMENT NOTICE: The Spring 1988 (26:1) issue of the *Mark Twain Journal* was mailed out to subscribers in July 1990. The next issue (26:2) is moving along well, with material in corrected proof.

LIBRARIANS: Please note in your computer that the *Mark Twain Circular* every three months provides publication information on the delayed *Mark Twain Journal*. This may help reduce avoidable claims. Your cooperation is important. Our staff is very small, and we must allocate time between responding to claims and finishing the issues due on your subscription. Avoiding needless claims will help speed the publication of issues you need.

SERIAL LIBRARIANS: The *Mark Twain Circular* is entered selectively in the annual bibliographies of the Modern Language Association and the Modern Humanities Research Association, in the *Literary Criticism Register*, in *American Literary Scholarship*, and in "A Checklist of Scholarship on Southern Literature," appearing annually in the *Mississippi Quarterly* (Spring issues). The *Mark Twain Circular* contains ongoing annotated bibliography which began in *Mark Twain: A Reference Guide* (G.K. Hall, 1977) and continued in seven issues of *American Literary Realism*, from 1977-1983. Please file and bind with your *Mark Twain Journal*.

Mark Twain Circular
J. S. Leonard, Editor
The Citadel
Charleston, SC 29409

Non-Profit Org.
U.S Postage
PAID
Charleston, SC
Permit NO. 779



Mark Twain Circular

Newsletter of the Mark Twain Circle of America
Published in Association with the Mark Twain Journal

James S. Leonard, Editor, Mark Twain Circular
The Citadel, Charleston, SC 29409

Thomas A. Tenney, Editor, Mark Twain Journal
The Citadel, Charleston, SC 29409

Volume 5

October-December 1991

Number 4

The Mark Twain Project URGENTLY Needs Support

Twainians and other scholars of American culture who have become accustomed to the appearance every year of definitive new editions of Twain's works and letters will be dismayed to learn that the Mark Twain Project (MTP) is in jeopardy. The most recent review by the National Endowment for the Humanities (NEH) recommends that "the work must be cut back in one way or another." In view of serious reductions in funding already made and the fact that the NEH is contemplating additional cuts, the continuation of the MTP as it now exists is seriously threatened.

The MTP receives its major funding from two sources: the NEH and the University of California. Twelve years ago, the NEH was the primary contributor to MTP; now it is the secondary. In 1986 the NEH shifted its basic method of funding the MTP from outright contribution to matching funds and is now supplying a much smaller percentage of the total cost of the project. A glance at some figures will make clear what is happening. In the 1980-82 grant period, when the MTP budget was approximately \$856,000, the NEH supplied \$250,000 in an outright grant, and \$125,000 in matching funds; the University of

California supplied the rest. In the 1990-92 grant period, when the MTP budget is \$1,719,000, NEH's outright grant is \$160,000 and its matching fund contribution is \$290,000; the University is supplying \$979,000. In other words, simply because the University of California was willing to take up the slack, its contribution rose in 12 years from meeting 37% of the then MTP budget to 55% of a now doubled budget. Although the NEH's absolute contribution in the same time rose slightly, its direct and dependable commitment dropped by more than a third. (The rate and duration of the matching fund program is uncertain, subject to the whim of Congress.) The MTP is consequently approaching a financial crisis, and is very much in need of support.

Ironically, the very importance and success of the project is what is leading NEH to recommend a cutback. Mark Twain scholarship, which began to soar in the '50s, has made it evident that he is considered by most readers to be the quintessential nineteenth-century American author, and by scholars who work on him a writer of astonishing range, power, and complexity. With the formation of the MTP in the mid-sixties to establish correct texts and accurate editions of his works and papers, standards of research and scholarship

were developed that influenced all future Twain scholarship and created a reliable base of hard facts. Encouraged by a "market" for textual and biographical information needed for editing, a significant part of Twain scholarship turned in that direction. More letters, more textual variants, and more information turned up, and what might have first appeared to be an expanded and updated but still conventional edition of Twain's works and papers rapidly grew into the most thorough, advanced, and extensive editing enterprise ever attempted on an American author. Original estimates of the amount of work to be done and the length of time it would take to do it soon had to be revised upward. The NEH was not sure that it wanted to make a major on-going commitment to such a lengthy and expensive undertaking.

No subterfuge was involved on the editors' parts. They did not know what they were going to find once they were given access to material that Mark Twain's will had locked up. What they did find was an editorial bonanza that they increasingly came to realize would change our understanding both of Mark Twain and of the period in which he lived. Everyone knows that the revelation that Twain did not write *The Mysterious Stranger* as it was known before 1969 shook the literary world. The MTP edition of *Huckleberry Finn* in 1988 had a similar effect with a major restoration to chapter 16 of the raftsmen episode that had been removed from it to *Life on the Mississippi*, plus numerous other less spectacular but essential corrections and additions. Sketches and tales that were either unknown or very difficult to find were collected and made accessible for the first time. All of this work was based on detailed editing and scholarship, much of which appeared in the notes in the backs of the publications and often came from painstakingly tracking down references in the letters

and journals. Increasingly, the data bases for the Works and the Papers fed each other, and the staff (some of whom have been on the job since 1967) became more knowledgeable and skillful and more able to be informative.

The NEH, however, became restive with the undertaking. It began to be disturbed by the long footnotes on minor figures, especially in letters that did not seem important. It was troubled by the fact that the edition finally projected 72 volumes, only 20 of which have already been published, and that 23 of those volumes were to be letters. This meant a very long-term commitment for NEH, more than for most of the other projects it supports. It grew worried over the pace of the project, with only two or three new volumes coming out each year. It developed uncertainties over whether or not the outstanding team of highly trained full-time Twain researchers/editors who turn out magnificent work in cramped quarters are worth the salaries they are receiving (currently between \$38,000 and \$57,000/year). It was dismayed that a revised edition of *Roughing It* was deemed necessary and that the recent discovery of half the manuscript of *Huckleberry Finn* may mandate a revision of that book, also. In sum, it grew uncomfortable with the costs of continuing to support the MTP.

As long as the reviewing panels for each two-year grant continued to strongly support the project, the NEH muted its objections. But some of last year's reviewers were critical of the scope, length, and cost of the Twain edition and the NEH at last had the occasion to voice some of its accumulated demurs. Almost all of last year's reviewers conceded that editing standards are very high, and that efficiency has increased under the present editor. Nevertheless, a significant number of them expressed the foregoing reservations about the edition. As a consequence, the MTP now faces penalization for wanting to use its access in information and

expertise to illuminate the life and times of, arguably, the central figure of nineteenth-century American culture.

The objections that the NEH has raised are not without merit, especially in a time of recession and financial limitations. These objections, however, come *after* it has already greatly reduced its support, and the suggestions it proposes are not intended so much to improve the operation of the MTP as to attenuate it. Its recommendations, for example, about replacing the edition of all Twain letters with volumes of selected letters and cutting back on scholarship would fundamentally weaken the MTP and make its productions much less valuable. Its recommendations that "publication" be transferred from books to CD-ROM and microforms would also seriously degrade the character of the edition. Its recommendations about speeding up production seem innocuous enough, but the editorial team is already working as fast as it can under the present standards. To demand more speed, therefore, is really another way of mandating a drop in quality.

Neither the NEH nor the MTP is a villain; one is naturally concerned with fiscal constraints, and the other is naturally concerned with scholarly imperatives to quality. But the truth of the matter is that, like it or not, the original conception of the enterprise has long-since been outdated. The MTP has progressed far beyond the stage of being just another edition of a prominent author and has become a double magnum opus of American culture; it is both the historical record of an American classic and a model of the best of contemporary American literary scholarship. These two aspects of the MTP have become fused, and the ultimate judgment of the entire edition will be made on the basis of the best work it produced--i.e., what has already been done and is still in the pipeline. Further economies will undoubtedly have to be made, but it

is in NEH's best interest as well as the MTP's that this remarkable activity not be gutted or abridged.

To anyone familiar with the sort of work that the MTP does, it is readily apparent that besides the preparation of a definitive edition of Mark Twain's writings, it is also conferring at least three other originally unintended but now invaluable benefits upon the scholarly community. First, the editing methodology of the MTP has resulted in new state-of-the-art standards for all literary work. What started off as an edition of one author has yielded critical spinoffs for the entire field and is now the benchmark by which future editions of other authors are sure to be judged.

Second, the research that goes into the long footnotes on minor figures in Twain's letters makes those editions of correspondence indispensable tools of literary and historical research for all scholars of the period. Indeed, given the extraordinary range of Twain's contacts, both national and international, and the remarkable extent of his involvement in his age, his correspondence becomes a unique index to personalities and issues in the second half of the nineteenth century. Who can say who will be forever unimportant and what forever trivial? The MTP, quite properly, does not presume to prejudice these matters; but by generously sharing its wealth of garnered information, it will surely promote future scholarship that would otherwise be impossible or exceedingly unlikely.

Third, incredible though it sounds, it is evident that Mark Twain is more important than even most of his partisans have believed. So various were his experiences, so insatiably curious his mind, and so unsparingly honest his reflections that in addition to being the quintessential man of his time and place, he now is emerging as a man for all times and places, a figure akin to Shakespeare and Homer. His

Nevada friend Joe Goodman was uncannily right when he praised Twain for "the biblical force and simplicity" of his language and predicted that Twain would live as a classic after he had ceased to "sway people as the foremost humorist." The work of the MTP is not just another edition of a prominent author but the record of a world classic. The NEH has seldom invested its money so wisely or gotten so rich a return.

Now this outstanding project is in imminent danger of being diminished into something ordinary at the precise moment when it has hit its stride and is producing results not possible by any other means. With the present grant expiring in 1992 and a need to make up a \$90,000 shortfall before 1 March 1992, and in light of NEH's steady reduction of funding and its present disposition to require a cutback, the MTP is in urgent need of immediate and substantial support, and no group has more of an interest and obligation to supply this support than the Mark Twain Circle.

Just what forms this support should take is something that will have to be thought over in the next couple of months. Already some options have been suggested:

1. Try to persuade the NEH to commit itself to long-term support at a substantial and fixed level of funding.
2. Help the MTP locate potential donors--philanthropists, benefactors, foundations--that might be willing to underwrite all or part of the cost of individual volumes.
3. Develop a national publicity campaign to encourage popular and political support for the MTP.

The officers of the Circle will discuss this matter in December at the business meeting at the MLA Conference. Until that time, comments and suggestions are earnestly solicited from the membership. Please address all correspondence either to me (at Dept. of Humanities, Univ. of Michigan--Dearborn, Dearborn, MI

48128) or Prof. Pascal Covici (Dept. of English, Southern Methodist Univ., Dallas, TX 75275).

The MTP has always welcomed donations of Twain material--e.g., letters to or from him, contemporary newspaper articles about him, offprints of scholarly articles, etc. Now it will also welcome donations of money. Contributions should be made to:

The Friends of the Bancroft Library
University of California
Berkeley, CA 94720

All donations should be accompanied by a statement, either on the memo line of checks or on a separate note, specifying that the contribution is "For the Mark Twain Project." Contributions made out this way will be enhanced by matching funds. If you wish to see the work of the MTP continue, NOW is the time to act.

Lawrence I. Berkove
Univ. of Mich.--Dearborn

Twain in San Francisco

To: All Members of the Circle, and all students of American literature who recognize the importance of Mark Twain

From: Pascal Covici, Jr., President, Mark Twain Circle of America

You will want to be aware of the following opportunities at the MLA meeting in San Francisco:

1. Along with Tom Tenney and the *Mark Twain Journal*, the Circle will sponsor two open houses, each with at least one paper and discussion. On Saturday, December 28th, and on Sunday, the 29th, at 5:00, we will meet informally in the suite reserved for Tom Tenney and me in the Hilton. On Saturday, Laura E. Skandera-Trombley will hold forth on "Twain's deliberate fictionalizing of Olivia's fall and Dr. Newton's miraculolize cure." Why did Twain sensationalize and obscure the truth? We expect a

lively discussion. On Sunday, Kelly Anspaugh will argue that Huck is dead when he "tells" his tale. "Where was Huck When He Lit Out?: 'Post-Mortem Effects' in Mark Twain's *Adventures of Huckleberry Finn*" promises a controversial and fascinating look at the apparently "posthumous" narrative.

2. Interested persons should feel free to suggest additional presentations. Send proposals to me at 10124 Champa Drive, Dallas, TX 75218.

3. MLA meeting #209: Saturday, December 28th, at 10:15, the Circle's Executive Committee will hold an open business meeting in the Hilton's Cypress Room. The agenda will include the matter of the NEH and the Mark Twain Papers, as explicated in Larry Berkove's letter (above) to members.

4. MLA meeting #505: Sunday, December 29th, at 1:45, Vic Doyno and others will explore "The Discovery of the Manuscript of *Huckleberry Finn*" in the Hilton's Teakwood A & B rooms. Presiding: Victor Doyno. Speakers: Victor Doyno, William Loos, Victor Fischer.

5. MLA meeting #708: Monday, December 30th, at 10:15, Alan Gribben, Susan K. Harris, et al., will explore "Mark Twain's Cultural Environment" in the Hilton's Parlor I (Continental Ballroom). The American Humor Studies Association has graciously sponsored this program for the Circle. Presiding: David E. E. Sloane. Presentations: Alan Gribben, "Mark Twain and the Making of Boy Books"; Susan K. Harris, "'The Girls' Are Coming Soon to Read': Olivia Langdon's Reading Circle"; Judith Yaross Lee, "Twain's Comic Science." Respondents: Andrew Jay Hoffman, Suzi Naiburg Asher.

BE THERE OR BE SQUARE.

Pascal Covici, Jr.
President, MTCA
(Southern Methodist Univ.)

Quarry Farm Fellowships-in-Residence for Scholars and Writers

Fellowships-in-residence for scholars and writers normally are for a period of no less than two weeks and no more than two months. In addition to free lodging, Fellows receive a two hundred dollar stipend in exchange for a talk on work in progress in the case of scholars or a reading or workshop in the case of writers.

Application is made by a letter to the Director specifying the nature of the applicant's project and two sets of preferred dates for the residency. A resume should accompany the letter, and the names, positions and addresses of three references should be provided either in the letter or accompanying resume. Writers should also include a ten page sample of their work. Application should be made no later than ninety days before the earliest dates proposed for a residency.

Facts pertinent to a Residency at the Center:

Residents have access to a fully equipped kitchen and laundry, but are responsible for providing their own food and preparing their meals. Meal plans can also be arranged with the College's dining service on campus. Linen is provided, but laundry supplies are not.

The upstairs level of the main house at Quarry Farm includes five bedrooms, three baths, and two study areas. The Center may accommodate more than one resident at a time.

The Center reserves the right to make occasional prearranged use of the lower floor, but residents are assured of privacy on the second level.

The Gannett Educational Center (formerly the servants' cottage) located behind the main house is utilized throughout the year as a meeting place and staff center. Full-time caretakers are also on the premises in a separate living unit adjacent to the main residence.

Because the Center is located three miles outside of Elmira, an automobile is necessary.

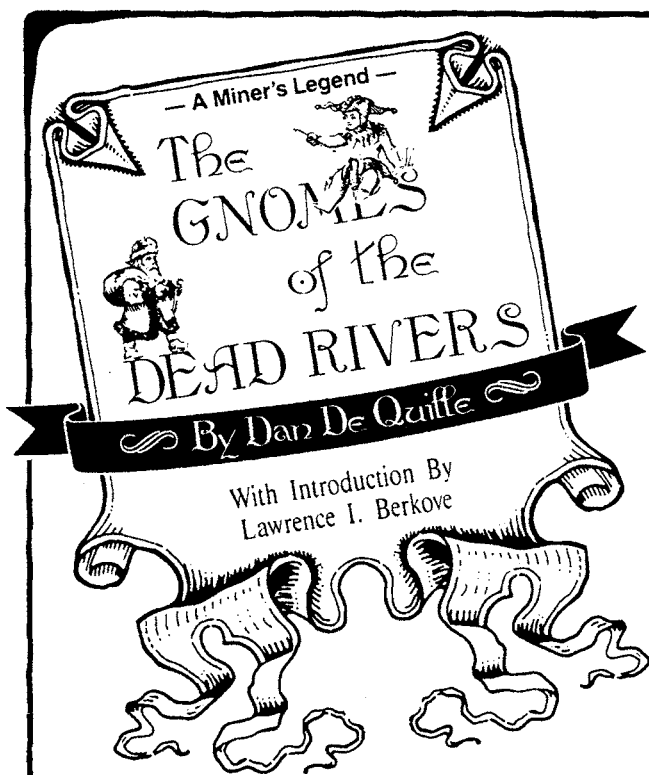
Twain Journal. See "Twain in San Francisco" (above) for details.

Dates to Circle

December 27-30, 1991. MLA Convention in San Francisco. There will be three Twain-related sessions: 209, 505, and 708. There will also be two "open house" sessions sponsored by the Mark Twain Circle and the Mark

Publication of the *Mark Twain Circular* is funded in part through a grant from the Citadel Development Foundation.

Thanks to student assistant Mark Little (The Citadel) for his help in preparing this issue of the *Circular*.



78 pages, deluxe acid-free paper
Limited edition paper \$10

SPECIAL LIMITED EDITION

The Gnomes of the Dead Rivers is a beautiful and moving novella by Mark Twain's friend and associate, the classic Western author Dan De Quille.

An allegory of wealth and happiness, the story adds depth and variety to what we know of the milieu of the Old West.

An introduction by Professor Lawrence I. Berkove, a scholar of nineteenth-century American literature, enhances this 110-year-old masterpiece of De Quillean moralism.

Falcon Hill Press

Box 1431

Sparks, NV 89432-1431

(702) 786-2134

ABOUT MARK TWAIN

Abbreviations used in this bibliographical series are listed in the January/February 1990 *Mark Twain Circular*. In addition, a combination of year, letter, and number refers to an entry in my *Mark Twain: A Reference Guide* (Boston: G. K. Hall, 1977), and *ALR* refers to one of its supplements appearing in the journal *American Literary Realism*. Readers wishing to keep up to date on Twain scholarship may also wish to consult the list of other recommended bibliographic sources in the January/February 1990 *Circular*.

Thomas A. Tenney
(Editor, *MT Journal*)

Current Books and Articles

BRENNER, GERRY. "More than a Reader's Response: A Letter to 'De Ole True Huck.'" *The Journal of Narrative Technique* 22.2 (Spring 1990): 221-34. Huck's raft companion appears as "James Alexander Hawkins," father of the writer "John Isaac Hawkins." After the events of *HF* James Hawkins bought the freedom of his wife and two children and moved to Chicago. He bought a copy of *HF*, which his son John read aloud to the family every night for over three weeks, at the end of which time Jim presented his critique of the book and of Huck. Some events are described and interpreted differently from the point of view of Jim, who found it necessary to feign ignorance and intellectual limitations at times to keep from annoying a Huck who is described here as somewhat selfish, and mean-spirited in his willingness to go along with Tom in the charade of the final chapters.

CAMFIELD, GREGG. "Sentimental Liberalism and the Problem of Race in *Huckleberry Finn*." *Nineteenth-*

Century Literature 46 (June 1991): 96-113. Although MT attacked sentimentalism, he was capable of writing such tear-jerkers as "A Dog's Tale" and "A Horse's Tale," and in *HF* ridiculed the "tears and flapdoodle" of the King and Duke but took a highly sentimental stance in telling Jim's story about his deaf daughter. MT uses "sentimentality to tell the reader to sympathize with the black man's humanity," blurring "the distinction between stereotypical and particular representations." This blurring has led to recent criticisms of the depiction of Jim: as realistic portrait of a black man / "as the image of a black man that a kind-hearted but bigoted boy might have as he struggles to realize an ideal of love." Camfield ends by referring to Ralph Ellison's 1982 introduction to *Invisible Man*: "I think Ellison may have discovered much about the power of sentimentalism in addressing the American problem of race, that in blurring distinctions between reality and ideality, it engages our sympathy and allows us to imagine human connections that we cannot fully articulate."

CARDWELL, GUY. *The Man Who Was Mark Twain: Images and Ideologies*. New Haven: Yale UP, 1991. Cardwell's revisionist study brings little pleasure to those who enjoy our "cherished and magnified versions of an idealized Mark Twain," and irritates by its narrowly political approach. Edward L. Galligan (in the July-September 1991 *Sewanee Review*) calls this "only another banal exercise in exposing the true nature of *The Man* . . . full of psychobabble and Marxiblurb about cardboard figures and straw men."

Chapter titles promise little new: "Art and Money"; "Olivia, Gender, and Taste"; "Sexuality and the Clemenses"; "Impotence and Pedophilia"; "Racism and *Huckleberry Finn*." Critics may charge Cardwell either with unfamiliarity with recent developments (such as what African

Americans have been writing about Huck), or using his material selectively: he credits 1971 and 1974 publications by Arthur G. Pettit for "much of the evidence for Clemens's racism that I cite."

It is easy to dismiss much of what Cardwell says as speculation and ax-grinding, but enough comes through to make Twain-lovers uncomfortable. His piling-up of quotations from both the early and the late Twain gathers things one might wish had been left unsaid, such as Twain's 1896 letter to his friend Henry Rogers promising a wealth of exotic wedding gifts, among them "a herd of niggers."

As a whole, Cardwell's book is seriously off-balance, but its unsympathetic view of Mark Twain is based on evidence Twain enthusiasts would like to ignore or gloss over. In this it serves as a useful corrective, though a distortion of its subject. It deserves a place on the library shelf next to Maxwell Geismar's debunking and the far better work of Hamlin Hill.

From the Backlog

BASSETT, JOHN EARL. "Huckleberry Finn: The End Lies in The Beginning." *American Literary Realism* 17 (Spring 1984): 91-98. Despite the linear sequences of events on the river, the course of *HF* is circular. Tom begins and ends by playing tricks on Jim, and in between he "is actually the most important absent presence in the book," whether as Huck's touchstone for how an escape should have been done in style or as a counterpart of the King and Duke. Huck, on the other hand, is individual and non-conformist (the other great such figure in our literature is Thoreau), but passive, literal: "paradoxically, Twain creates his greatest 'stretcher' by means of a voice that denies fiction, that insists on limiting cognition to empirical perceptions and values to pragmatic

consequences."

BRAUER, ARLETTE. "Life is Still Perilous for *Huck Finn*." *MD* [an ad-filled, non-technical magazine for the medical profession], 28 (June 1984): 117-20, 125, 128, 133. This is a substantially researched and workmanlike article directed at a sophisticated audience whose specialization is not in American literature. Scholars will not be greatly troubled by a few minor errors concerning MT's life and works, and in the extensive treatment of the critical reputation of *HF* there is much of interest on the reaction of black parents and educators of the present time. Brauer reproduces in facsimile most of an unsigned interview with John H. Wallace in the *Washington Post* for 8 Sept. 1983, on which is superimposed the front cover of Wallace's adaptation of *HF* with the language made inoffensive. In conclusion, Brauer cites a complaint to Pennsylvania's Human Rights Commission over the teaching of *HF*, and the response by "a group from Pennsylvania State University, which includes the Forum of Black Affairs, . . . studying the effect of the book on 300 white ninth-graders in the district. The study's report: 'Reading *Huckleberry Finn* and discussing it in class actually enhanced the racial attitudes of whites toward blacks.' The district has made the reading of the book optional 'pending further study.'"

CHAMBERS, BRADFORD. "Scholars and *Huck Finn*: a New Look." *Interracial Books for Children Bulletin* 15.4 (1984): 12-13. On issues of racism brought up at a conference at Penn State University (26-28 Apr. 1984). Participants in some of the 16 panels (most of them concerned with *HF* on the college or graduate level) seemed unconcerned or insentitive, but the black panel (subtitled "Humor--At Whose Expense?") drew more than half the participants at the conference. "In his opening remarks James Stewart

said that the issue was not banning *Huck Finn*, but when and how to teach it." Margot Allen described her pain and her son's pain on reading *HF* in school, a generation apart. Jane Madsden attacked a study purportedly demonstrating that ninth-graders are not negatively affected by reading *HF*, and Terrell Jones, author of the study, responded that his findings were only tentative, but he had urged that *HF* not be taught below grade 11 or 12, and that area schools undertake a racism-awareness program. "Twain's effective use of irony to satirize social evils was acknowledged by everyone, but the dialogue raised a second question: What is the age level at which children can understand the irony? By the end of the discussion, there was considerable agreement that the humor in *Huck Finn* was too sophisticated for use in elementary school, but several participants wondered if high school students are any better equipped." Chambers "met the following day with representatives of the Penn State College of Education and the Black Studies Program. We agreed to jointly develop a set of lesson plans that teachers might use with *Huck Finn*. We welcome suggestions for this project and will keep *Bulletin* readers informed of our progress."

CRICHTON, ANDREW B. "Rolling Along with Huck and Jim down the Mighty Mississippi a Hundred Years Later." *Proteus* 1.2 (1984): 15-18. The head of a high-school English department has been using *HF* to show his composition students how a professional goes about his work. He contrasts Greg Matthews' *The Further Adventures of Huckleberry Finn* with the authentic voice in *HF*, and concludes with praise for Huck's direct and forthright control of language.

DORRIS, RONALD. "Paternal Relationships in *Huckleberry Finn*." *Proteus* 1.2 (1984): 57-60. "The father/son theme stays in the forefront of *Huck-*

leberry Finn. This is a theme which requires examination not only for the spiritual and material coming of age for a boy, but also the material and spiritual coming of age of a nation." Father figures include Pap Finn, Jim, the King, and Louis XIV (cited as Jim's father in one of the inscriptions in the "evasion" section). Jim recognizes his own mistake as a father when he struck his deaf daughter, and he criticizes Solomon's judgment as that of a man with so many children to spare that he does not properly value one baby. "Yet, Jim is not bitter. He realizes that if ever there is to be responsibility between fathers and sons in any nation, someone responsible must assume the role of father."

EDWARDS, JUNE. "Morality and *Huckleberry Finn*." *Humanist* 44 (Mar.-Apr. 1984): 35-36. "It's a terrible book to give a child--if one believes in absolute values and admits no hierarchy of moral reasoning." Censors of the right oppose a supposed undermining of traditional values and fail to see that Huck respects sincerity and has "much natural wisdom." Others object to the portrayal of blacks and the use of the word "nigger," missing MT's ironic point.

SHANLEY, MARY LYNDON, and PETER G. STILLMAN. "Mark Twain: Technology, Social Change, and Political Power." In *The Artist and Political Vision*. Ed. Benjamin R. Barber and Michael J. Gargas McGrath. New Brunswick, NJ: Transaction, 1982. 267-89. Mark Twain's *A Connecticut Yankee in King Arthur's Court*, although frequently regarded as a fantasy for children, is a serious and devastating critique of feudal and modern industrial societies, and of utopian literature and political thought. "It is perhaps not surprising that the darker aspects of *A Connecticut Yankee* are often overlooked." Twain scholars will find this thin and derivative.

DUKE UNIVERSITY PRESS

SATIRE OR EVASION?

Black Perspectives on *Huckleberry Finn*

James S. Leonard, Thomas A. Tenney,

and Thadious M. Davis, editors

Though one of America's best known and loved novels, Mark Twain's *Adventures of Huckleberry Finn* has often been the subject of fierce controversy because of its racist language and reliance on racial stereotypes. This collection of fifteen essays by prominent African American scholars and critics examines the novel's racist elements and assesses the degree to which Twain's ironies succeed or fail to turn those elements into a satirical attack on racism.

Ranging from the laudatory to the openly hostile, these essays include personal impressions of *Huckleberry Finn*, descriptions of classroom experience with the book, evaluations of its ironic and allegorical aspects, explorations of its nineteenth-century context, and appraisal of its effects on twentieth-century African American writers. Among the issues the authors contend with are Twain's pervasive use of the word "nigger," his portrayal of the slave Jim according to the conventions of the minstrel show "darker," and the thematic chaos created by the "evasion" depicted in the novel's final chapters.

Sure to provoke thought and stir debate, *Satire or Evasion?* provides a variety of new perspectives on one of this country's most troubling classics.

Contributors. Richard K. Barksdale, Bernard W. Bell, Mary Kemp Davis, Peaches M. Henry, Betty Harris Jones, Rhett S. Jones, Julius Lester, Donnarae MacCann, Charles H. Nichols, Charles H. Nilon, Arnold Rampersad, David L. Smith, Carmen Subryan, John H. Wallace, Kenny Jackson Williams, Fredrick Woodard.

283 pages, index

library cloth edition ISBN 0-8223-1163-1, \$45.00

paper ISBN 0-8223-1174-7, \$17.95

Of related interest:

Mark Twain's *Pudd'nhead Wilson*: Race, Conflict and Culture

Susan Gillman and Forrest Robinson, editors

1990, paper ISBN 0-8223-1046-5, \$16.95

6697 College Station/Durham, NC 27708/ (919) 684-2173

ABOUT THE CIRCULAR. The *Mark Twain Circular* was launched in January 1987 by Thomas A. Tenney (Editor of the *Mark Twain Journal*), who edited the first issue, then passed the *Circular* baton to the present editor. An individual who pays dues to the Mark Twain Circle of America or subscribes to the *Mark Twain Journal*, or both, receives one subscription (four issues per year) to the *Circular*. The Mark Twain Circle and the *Mark Twain Journal* are independent entities, but members of the Circle enjoy a reduced subscription rate for the *Journal* (see subscription forms below).

ABOUT THE CIRCLE. The Mark Twain Circle of America was formed at an organizational meeting held at the December 1986 Modern Language Association convention in New York; the membership has since grown to approximately 350. Current officers are: President--Pascal Covici, Jr.; Vice President--David E. E. Sloane; Executive Coordinator--Michael J. Kiskis; Executive Committee--Alan Gribben, Susan K. Harris, and Shelley Fisher Fishkin. Past Presidents: Louis J. Budd, Alan Gribben. Past Executive Coordinators: Everett Emerson, James D. Wilson. Although many members are academic specialists, the Circle also includes many non-academic Twain enthusiasts. The Circle is in communication with other Mark Twain organizations, including those associated with sites important in his life, and cooperates with them.

ABOUT THE JOURNAL. Founded in 1936 by Cyril Clemens, the *Mark Twain Journal* is the oldest American magazine devoted to a single author. In 1982 Mr. Clemens retired, and the *Journal* moved to its present home in Charleston, S.C., under the editorship of Thomas A. Tenney. There are two issues per year, Spring and Fall, with a new volume each year (rather than every second year, as in the past). The *Journal* tends to appear late, and begs your patient indulgence. New subscribers may wish to begin with the 1988 issues rather than 1991. Prices are on the coupon below. Paid individual members of the Mark Twain Circle should note that fact and deduct \$5.00 per year from any subscriptions to the *Journal*. Back issues from 13:1 to the present are available at \$5.00 each, postpaid (\$2.50 on orders for ten or more; pre-1983 issues are thinner than modern ones and some are badly reprinted). An index 1936-83 counts as a back issue.

<p>To: Michael J. Kiskis Executive Coordinator, Mark Twain Circle Empire State College (SUNY) Saratoga Springs, NY 12866</p> <p>Please enroll me in the MARK TWAIN CIRCLE OF AMERICA. I enclose a check for \$7.00 (\$8.00 for a non-U.S. address) made out to the MARK TWAIN CIRCLE OF AMERICA.</p> <hr/> <p style="text-align: center;">(printed name)</p> <hr/> <p style="text-align: center;">(address)</p> <hr/>	<p>To: <i>Mark Twain Journal</i> Box 1834 Charleston, SC 29402</p> <p>Please enter my subscription to the <i>Mark Twain Journal</i> at \$12.00 for 1988, \$15.00 for 1989, 1990, or 1991. Individual members of the Mark Twain Circle of America should deduct \$5.00 per year.</p> <hr/> <p style="text-align: center;">(printed name)</p> <hr/> <p style="text-align: center;">(address)</p> <hr/> <p>LIBRARIES: \$15.00/year, no discount FOREIGN: add \$1.00/ year for postage</p>
---	--

FULFILLMENT NOTICE: The two 1989 issues (27:1 and 27:2) of the *Mark Twain Journal* are being mailed out to subscribers in the fall of 1991.

LIBRARIANS: Please note in your computer that the *Mark Twain Circular* every two months provides publication information on the *Mark Twain Journal*. This may help reduce avoidable claims. Your cooperation is important. Our staff is very small, and we must allocate time between responding to claims and finishing the issues due on your subscription. Avoiding needless claims will help speed the publication of issues you need.

SERIAL LIBRARIANS: The *Mark Twain Circular* is entered selectively in the annual bibliographies of the Modern Language Association and the Modern Humanities Research Association, in the *Literary Criticism Register*, in *American Literary Scholarship*, and in "A Checklist of Scholarship on Southern Literature," which appears annually in the *Mississippi Quarterly* (Spring issues). The *Mark Twain Circular* contains ongoing annotated bibliography which began in Thomas A. Tenney's *Mark Twain: A Reference Guide* (G. K. Hall, 1977) and continued in seven issues of *American Literary Realism*, from 1977-1983. Please file and bind with your *Mark Twain Journal*.

Material for publication in the *Mark Twain Circular* should be directed to:
James S. Leonard, Editor
Mark Twain Circular
English Department
The Citadel
Charleston, SC 29409

Mark Twain Sessions at MLA

December 28 (Saturday): 10:15 MLA meeting #209 (business meeting of the Mark Twain Circle); Hilton, Cypress Room
5:00 Open house session (speaker: Laura Skandera-Trombley) at the Circle/*Journal* suite at the Hilton

December 29 (Sunday): 1:45 MLA meeting #505 ("The Discovery of the Manuscript of *Huckleberry Finn*"); Hilton, Teakwood A & B rooms
5:00 Open house session (speaker: Kelly Anspaugh) at the Circle/*Journal* suite at the Hilton

December 30 (Monday): 10:15 MLA meeting #708 ("Mark Twain's Cultural Environment"); Hilton, Continental Ballroom